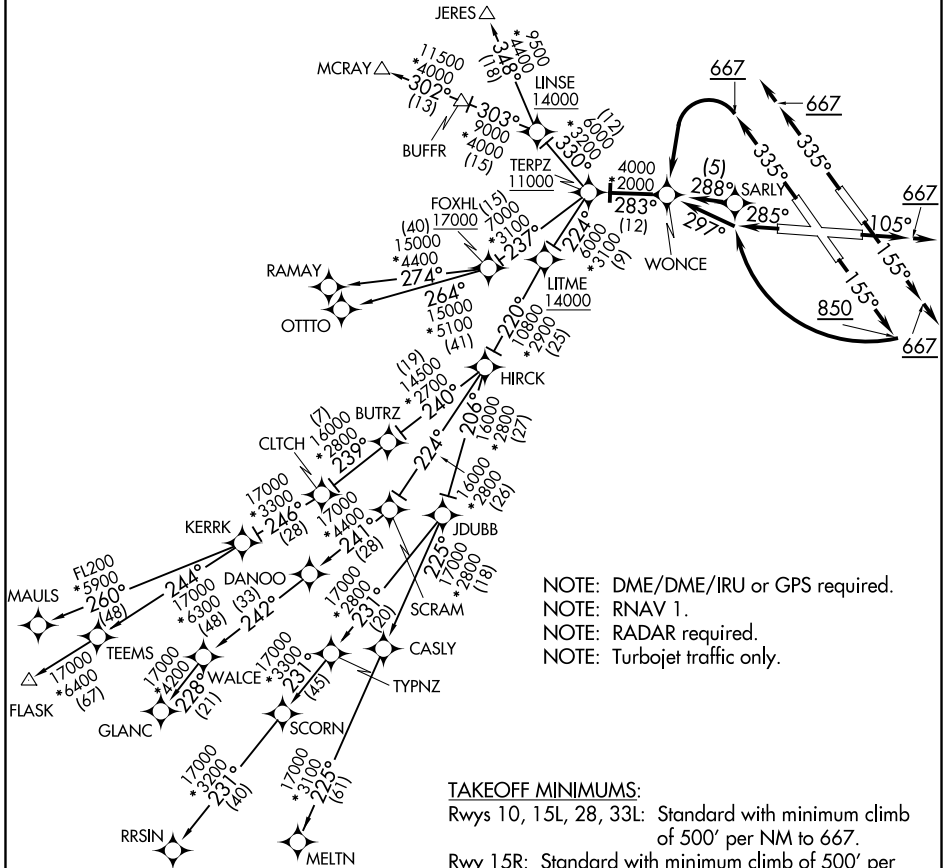


**TOP ALTITUDE:**  
**RAMAY, OTTTO, MAULS, FLASK,**  
**RRSIN, GLANC, MELTN**  
**TRANSITIONS: 1700N**  
**JERES, MCRAY TRANSITIONS:**  
**1600N**

D-ATIS  
115.1 127.8  
CLNC DEL  
118.05  
CPDLC  
GND CON  
121.9  
BALTIMORE TOWER  
119.4 257.8  
POTOMAC DEP CON  
128.7 307.9



NOTE: DME/DME/IRU or GPS required.  
NOTE: RNAV 1.  
NOTE: RADAR required.  
NOTE: Turbojet traffic only.

**TAKEOFF MINIMUMS:**  
Rwys 10, 15L, 28, 33L: Standard with minimum climb  
of 500' per NM to 667.  
Rwy 15R: Standard with minimum climb of 500' per  
NM to 4000.  
Rwy 33R: Standard with minimum climb of 500' per  
NM to 800.

(NARRATIVE ON FOLLOWING PAGE)  
(NOTES CONTINUED ON FOLLOWING PAGE)

NOTE: Chart not to scale.

NE-3, 08 OCT 2020 to 05 NOV 2020

NE-3, 08 OCT 2020 to 05 NOV 2020