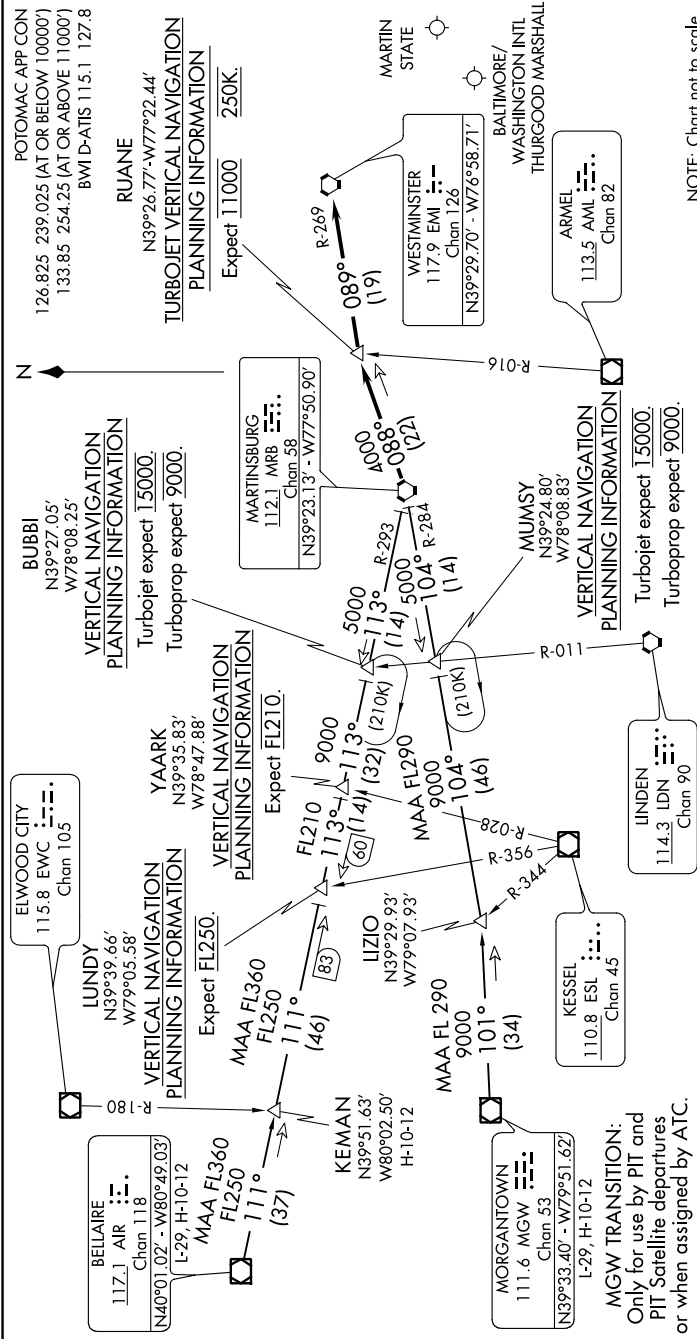


WESTMINSTER SEVEN ARRIVAL

BALTIMORE, MARYLAND

NE-3, 08 OCT 2020 to 05 NOV 2020



ARRIVAL ROUTE DESCRIPTION

BELLAIRE TRANSITION (AIR.EM17): From over AIR VOR/DME on AIR R-111 to LUNDY, then on MRB VORTAC R-293 to MRB VORTAC. Thence
KEMAN TRANSITION (KEMAN.EM17): From over KEMAN on AIR R-111 to LUNDY, then on MRB VORTAC R-293 to MRB VORTAC. Thence
MORGANTOWN TRANSITION (MGW.EM17): From over MGW VOR/DME on MGW R-101 to LIZIO, then on MRB VORTAC R-284 to MRB VORTAC. Thence
 From MRB on MRB R-088 to RUANE, then on EMI VORTAC R-269 to EMI. Expect vectors to final approach course after EMI.

NE-3, 08 OCT 2020 to 05 NOV 2020

WESTMINSTER SEVEN ARRIVAL

BALTIMORE, MARYLAND