

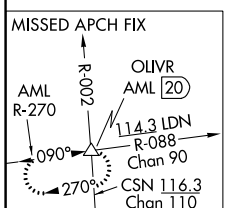
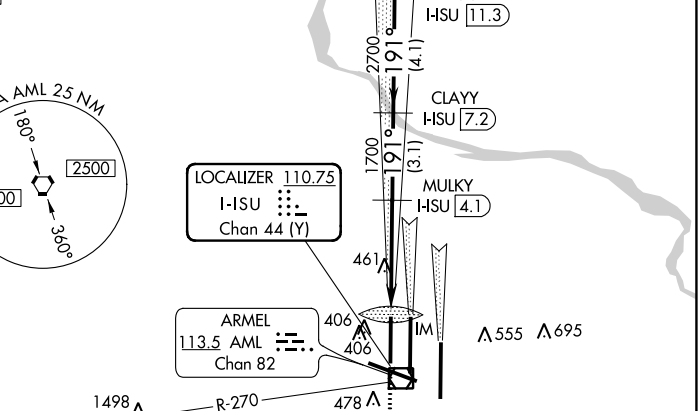
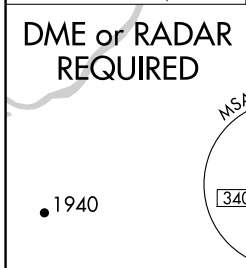
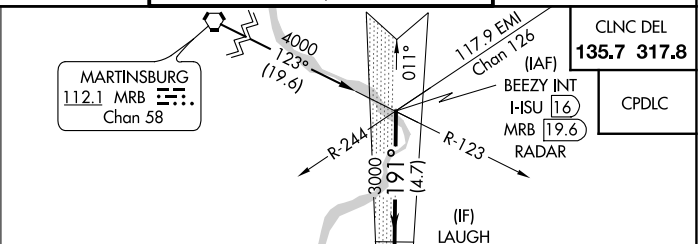
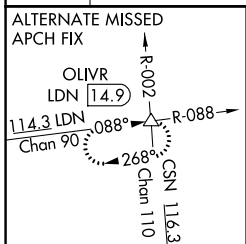
LOC/DME I-HSU 110.75 Chan 44 (Y)	APP CRS 191°	Rwy Idg TDZE Apt Elev 9400 278 312
--	------------------------	--

ILS RWY 19R (CAT II & III)

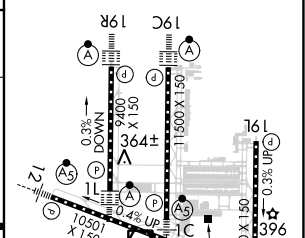
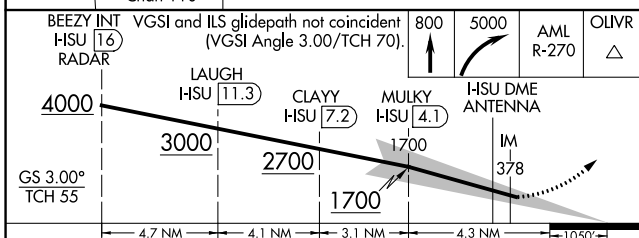
WASHINGTON DULLES INTL (IAD)

Simultaneous approach authorized with ILS or LOC/DME
MISSED APPROACH: Climb to 800 then climbing right turn to 5000 via AML VOR/DME R-270 to OLIVR INT/AML 20 DME and hold, continue climb-in-hold to 5000.

D-ATIS 134.85	POTOMAC APP CON 120.45 306.925 (241°-330°) 128.525 306.925 (091°-240°) 126.1 338.25 (331°-090°)	DULLES TOWER 120.1 317.8 (Rwy 1R/19L) 120.25 348.6 (Rwy 1C/19C) 134.425 348.6 (Rwys 1L/19R and 12/30)	GND CON 121.9 317.8 (EAST) 121.625 348.6 (WEST)
-------------------------	---	---	---



ELEV 312	D	TDZE 278
----------	----------	----------



CATEGORY	A	B	C	D
S-ILS 19R	CAT II RA 103/12 100 DA 378			
S-ILS 19R	CAT IIIa RVR 07			
S-ILS 19R	CAT IIIb RVR 06			
S-ILS 19R	CAT IIIc NA			

CATEGORY II & III ILS - SPECIAL AIRCREW & AIRCRAFT CERTIFICATION REQUIRED

TDZ/CL Rwys 1C, 1L, 1R, 12, 19C and 19R
 REL Rwy 30
 HIRL all Rwys

NE-3, 08 OCT 2020 to 05 NOV 2020

NE-3, 08 OCT 2020 to 05 NOV 2020