

LOC I-OSZ 111.3	APP CRS 011°	Rwy ldg TDZE 286 Apt Elev 313
---------------------------	------------------------	---

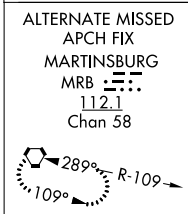
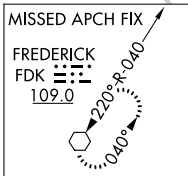
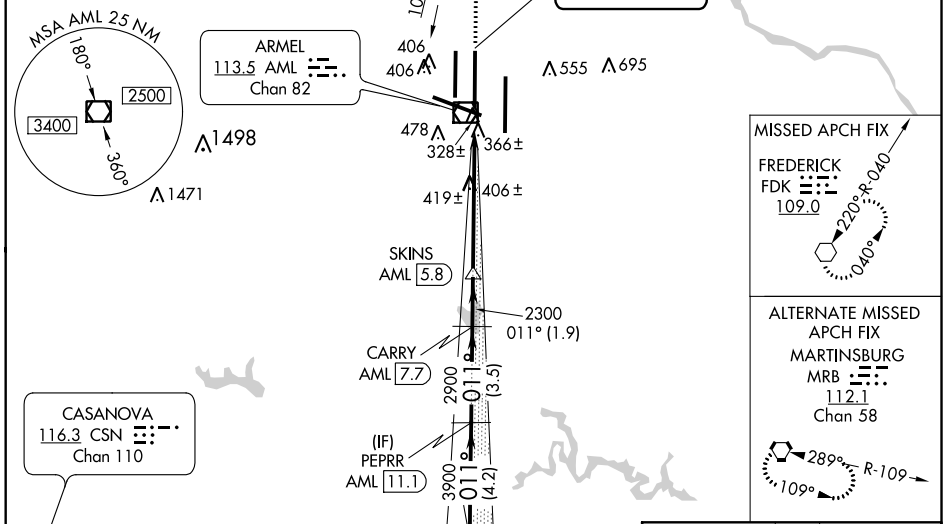
ILS RWY 1C (SA CAT II)

WASHINGTON DULLES INTL (IAD)

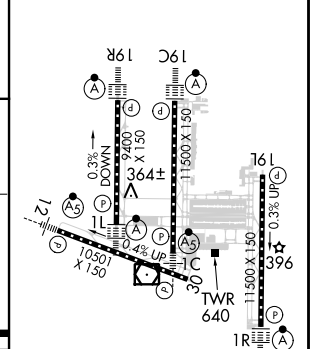
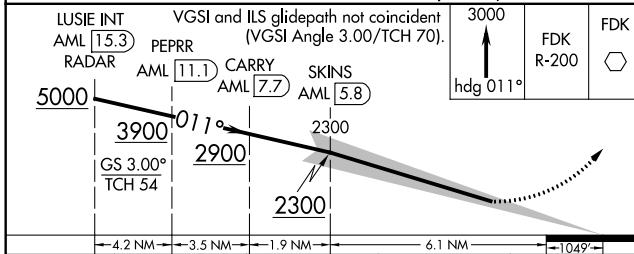
<p>▼ DME from AML VOR/DME. Simultaneous reception of I-OSZ and AML DME required.</p> <p>▲ Simultaneous approach authorized with ILS or LOC/DME Rwy 1L, ILS Rwy 1L (Cat II), ILS Rwy 1L (Cat III), ILS or LOC Rwy 1R, ILS Rwy 1R (Cat II), ILS Rwy 1R (Cat III). Reduced lighting: Requires specific OPSPEC, MSPEC, or LOA approval and use of autoland or HUD to touchdown. DME required.</p>	<p>MALSR</p>	<p>MISSED APPROACH: Climb to 3000 on heading 011° and FDK VOR R-200 to FDK VOR and hold.</p>
---	--------------	--

POTOMAC APP CON 120.45 306.925 (241°-330°) 128.525 306.925 (091°-240°) 126.1 338.25 (331°-090°)	DULLES TOWER 120.1 317.8 (Rwy 1R/19L) 120.25 348.6 (Rwy 1C/19C) 134.425 348.6 (Rwys 1L/19R and 12/30)	GND CON 121.9 317.8 (EAST) 121.625 348.6 (WEST)	CLNC DEL 135.7 317.8
---	---	---	--------------------------------

D-ATIS 134.85	LOCALIZER 111.3 I-OSZ	CPDLC
-------------------------	---------------------------------	-------



ELEV 313	D	TDZE 286
----------	----------	----------



CATEGORY	A	B	C	D
S-ILS 1C		RA 104/12 100 DA 386		

CATEGORY II ILS - SPECIAL AIRCREW & AIRCRAFT CERTIFICATION REQUIRED

TDZ/CL Rwys 1C, 1L, 1R, 12, 19C and 19R
REIL Rwy 30
HIRL all Rwys

NE-3, 08 OCT 2020 to 05 NOV 2020

NE-3, 08 OCT 2020 to 05 NOV 2020