

LOC/DME I-SGC <b>110.1</b> Chan <b>38</b>	APP CRS <b>191°</b>	Rwy Idg <b>11500</b> TDZE <b>302</b> Apt Elev <b>313</b>
---	------------------------	--

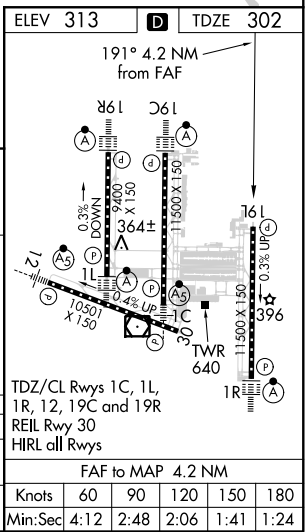
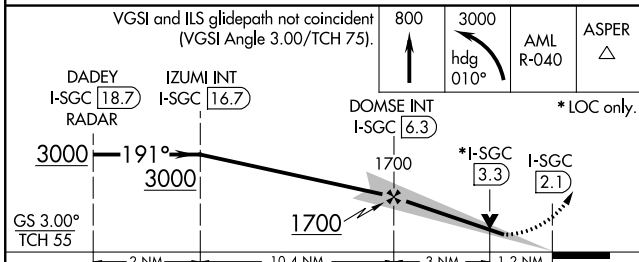
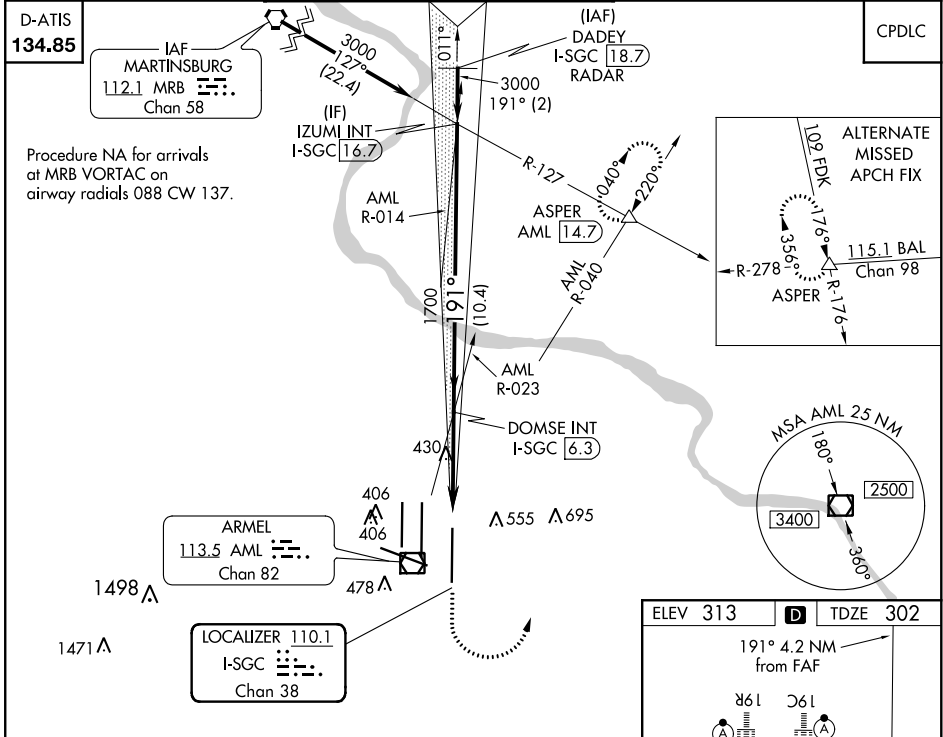
# ILS or LOC RWY 19L

WASHINGTON DULLES INTL (IAD)

**⚠** Simultaneous approach authorized with Rwy 19C or 19R.  
**\*\*1800 RVR authorized with the use of FD or AP or HUD to DA.**

MISSED APPROACH: Climb to 800 then climbing left turn to 3000 on heading 010° and AML VOR/DME R-040 to ASPER INT/AML 14.7 DME and hold.

POTOMAC APP CON <b>120.45 306.925</b> (241°-330°) <b>128.525 306.925</b> (091°-240°) <b>126.1 338.25</b> (331°-090°)	DULLES TOWER <b>120.1 317.8</b> (Rwys 1R/19L) <b>120.25 348.6</b> (Rwy 1C/19C) <b>134.425 348.6</b> (Rwys 1L/19R and 12/30)	GND CON <b>121.9 317.8</b> (EAST) <b>121.625 348.6</b> (WEST)	CLNC DEL <b>135.7 317.8</b>
---	--	---	--------------------------------



DADEY I-SGC <b>18.7</b> RADAR	IZUMI INT I-SGC <b>16.7</b>	DOMSE INT I-SGC <b>6.3</b>	*I-SGC <b>3.3</b>	I-SGC <b>2.1</b>
*LOC only.				
CATEGORY	A	B	C	D
S-ILS 19L	<b>**502/24 200 (200-½)</b>			
S-LOC 19L	<b>740/24 438 (500-½)</b>	<b>740/40 438 (500-¾)</b>	<b>740/50 438 (500-1)</b>	

NE-3, 08 OCT 2020 to 05 NOV 2020

NE-3, 08 OCT 2020 to 05 NOV 2020