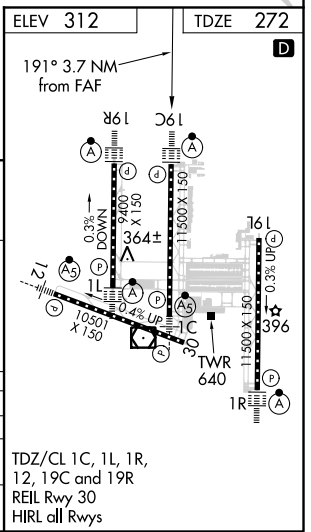
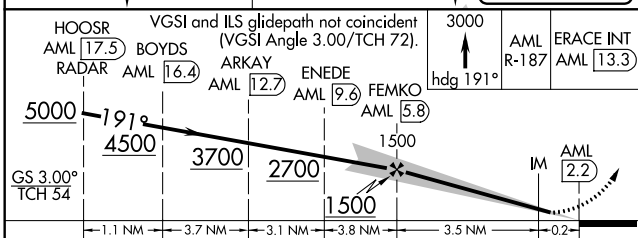
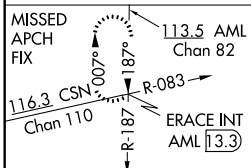
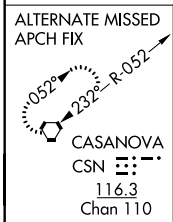
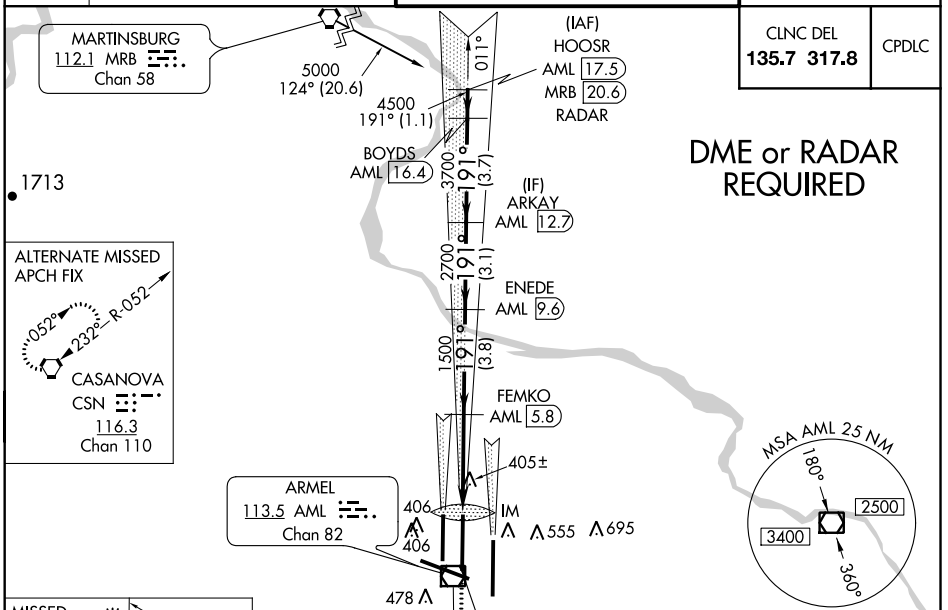


LOC I-DLX 111.3	APP CRS 191°	Rwy Idg 11089 TDZE 272 Apt Elev 312
---------------------------	------------------------	--

ILS or LOC/DME RWY 19C

WASHINGTON DULLES INTL (IAD)

<p>⚠ DME from AML VOR/DME. Simultaneous reception of I-DLX and AML DME required. Simultaneous approach authorized with ILS or LOC Rwy 19L, ILS Rwy 19L (Cat II), ILS or LOC/DME Rwy 19R, ILS Rwy 19R (Cat II), ILS Rwy 19R (Cat III).</p>	ALSF-2 (A)	MISSED APPROACH: Climb to 3000 via heading 191° and AML VOR/DME R-187 to ERACE INT/AML 13.3 DME and hold.
	<p>D-ATIS 134.85</p> <p>POTOMAC APP CON 120.45 306.925 (241°-330°) 128.525 306.925 (091°-240°) 126.1 338.25 (331°-090°)</p>	<p>DULLES TOWER 120.1 317.8 (Rwy 1R/19L) 120.25 348.6 (Rwy 1C/19C) 134.425 348.6 (Rwys 1L/19R and 12/30)</p>



CATEGORY	A	B	C	D
S-ILS 19C	472/18		200 (200-½)	
S-LOC 19C	660/24	388 (400-½)		660/40 388 (400-¾)
CIRCLING	940-1 628 (700-1)		940-1¾ 628 (700-1¾)	940-2 628 (700-2)

NE-3, 08 OCT 2020 to 05 NOV 2020

NE-3, 08 OCT 2020 to 05 NOV 2020