

LOC/DME I-OIU <b>110.75</b> Chan <b>44 (Y)</b>	APP CRS <b>011°</b>	Rwy ldg <b>9400</b> TDZE <b>296</b> Apt Elev <b>312</b>
--	------------------------	--

# ILS or LOC/DME RWY 1L

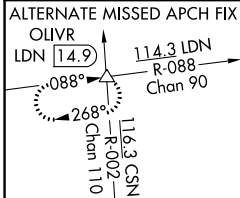
WASHINGTON DULLES INTL (IAD)

Simultaneous approach authorized with ILS or LOC/DME Rwy 1C, ILS Rwy 1C (Cat II), RNAV (GPS) Y Rwy 1C, ILS or LOC Rwy 1R, ILS Rwy 1R (Cat II), ILS Rwy 1R (Cat III), RNAV (GPS) Y Rwy 1R.

ALSF-2

MISSED APPROACH: Climb to 800 then climbing left turn to 5000 via heading 240° and AML VOR/DME R-270 to OLIVR INT/AML 20 DME and hold, continue climb-in-hold to 5000.

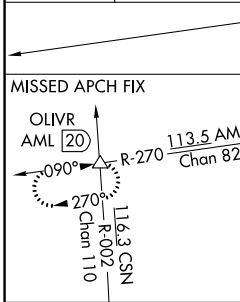
POTOMAC APP CON <b>120.45 306.925</b> (241°-330°) <b>128.525 306.925</b> (091°-240°) <b>126.1 338.25</b> (331°-090°)	DULLES TOWER <b>120.1 317.8</b> (Rwy 1R/19L) <b>120.525 348.6</b> (Rwy 1C/19C) <b>134.425 348.6</b> (Rwys 1L/19R and 12/30)	GND CON <b>121.9 317.8</b> (EAST) <b>121.625 348.6</b> (WEST)	CLNC DEL <b>135.7 317.8</b>
---	--	---	--------------------------------



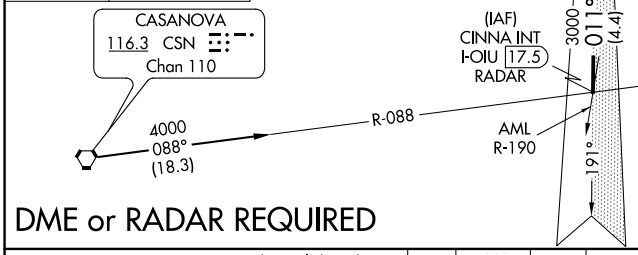
D-ATIS  
**134.85**

LOCALIZER **110.75**  
I-OIU  
Chan **44 (Y)**

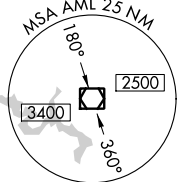
CPDLC



CASANOVA  
**116.3 CSN**  
Chan **110**

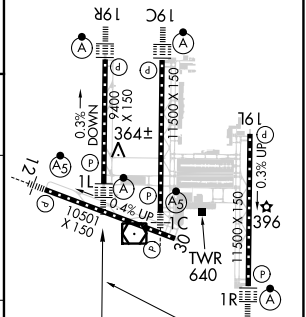
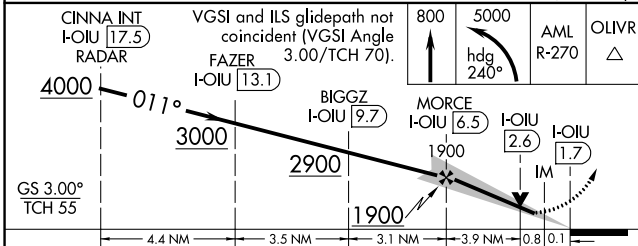


ARMEL  
**113.5 AML**  
Chan **82**



ELEV	312	TDZE	296
------	-----	------	-----

## DME or RADAR REQUIRED



CINNA INT I-OIU 17.5 RADAR	VGSI and ILS glidepath not coincident (VGSI Angle FAZER 3.00/TCH 70). I-OIU 13.1			800	5000	AML R-270	OLIVR
GS 3.00° TCH 55	4.4 NM	3.5 NM	3.1 NM	3.9 NM	0.8 NM	0.1 NM	
CATEGORY	A	B	C	D			
S-ILS 1L	496/18			200 (200-½)			
S-LOC 1L	660/24		364 (400-½)	660/40		364 (400-¾)	
CIRCLING	940-1	628 (700-1)	940-1¾	628 (700-¾)	940-2	628 (700-2)	

011° 4.8 NM from FAF

TDZ/CL Rwys 1C, 1L, 1R, 12, 19C and 19R  
REIL Rwy 30  
HIRL all Rwys

NE-3, 08 OCT 2020 to 05 NOV 2020

NE-3, 08 OCT 2020 to 05 NOV 2020