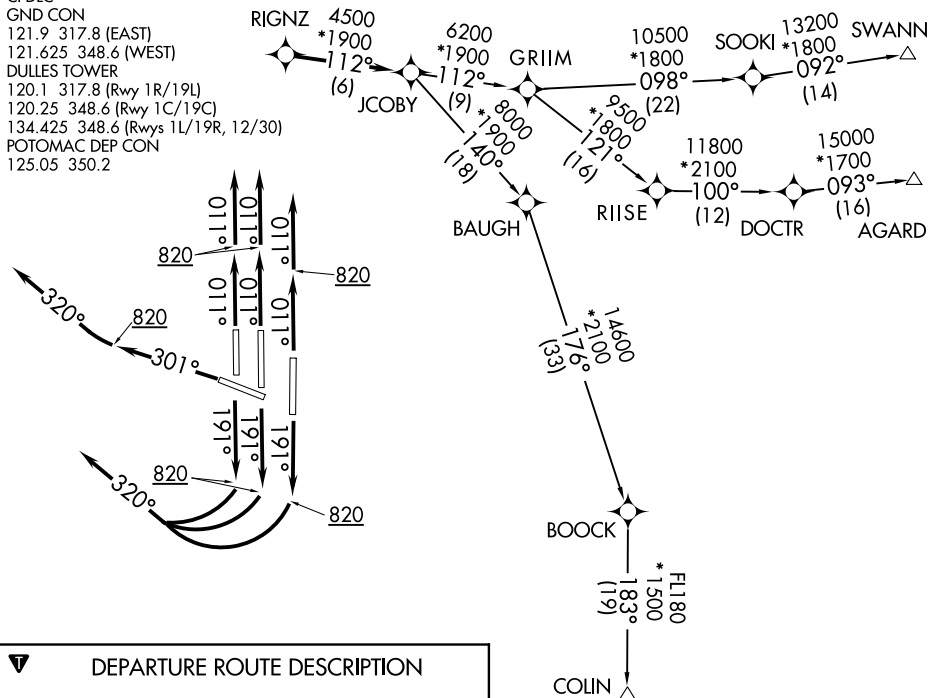


# JCOBY THREE DEPARTURE (RNAV)

**TOP ALTITUDE:  
3000**

D-ATIS 134.85  
 CLNC DEL  
 135.7 317.8  
 CPDLC  
 GND CON  
 121.9 317.8 (EAST)  
 121.625 348.6 (WEST)  
 DULLES TOWER  
 120.1 317.8 (Rwy 1R/19L)  
 120.25 348.6 (Rwys 1C/19C)  
 134.425 348.6 (Rwys 1L/19R, 12/30)  
 POTOMAC DEP CON  
 125.05 350.2



**DEPARTURE ROUTE DESCRIPTION**

**TAKEOFF RUNWAYS 1L/C/R:** Climb heading 011° to 820, then on heading 011° or as assigned by ATC, expect RADAR vectors to RIGNZ, thence....

**TAKEOFF RUNWAYS 19L/C/R:** Climb heading 191° to 820, then turn right heading 320° or as assigned by ATC, expect RADAR vectors to RIGNZ, thence....

**TAKEOFF RUNWAY 30:** Climb heading 301° to 820, then turn right heading 320° or as assigned by ATC, expect RADAR vectors to RIGNZ, thence....

....on track 112° to JCOBY. Then on assigned transition. Maintain 3000. Expect clearance to filed altitude within ten (10) minutes after departure.

**AGARD TRANSITION (JCOBY3.AGARD):**  
**COLIN TRANSITION (JCOBY3.COLIN):**  
**SWANN TRANSITION (JCOBY3.SWANN):**

**TAKEOFF MINIMUMS**  
 Rwys 1L/C/R, 19L/C/R, 30:  
 Standard with minimum climb of 500' per NM to 820.

- NOTE: RNAV 1.
- NOTE: DME/DME/IRU or GPS required.
- NOTE: RADAR required.
- NOTE: Turbojets only.
- NOTE: COLIN Transition - Part 121 aircraft only.
- NOTE: SWANN/AGARD Transitions - Part 121 and Part 129 aircraft only.

NOTE: Chart not to scale.

NE-3, 08 OCT 2020 to 05 NOV 2020

NE-3, 08 OCT 2020 to 05 NOV 2020