

WAAS CH <b>86310</b> W12A	APP CRS <b>121°</b>	Rwy Idg <b>10501</b> TDZE <b>310</b> Apt Elev <b>312</b>
---------------------------------	------------------------	--

# RNAV (GPS) RWY 12

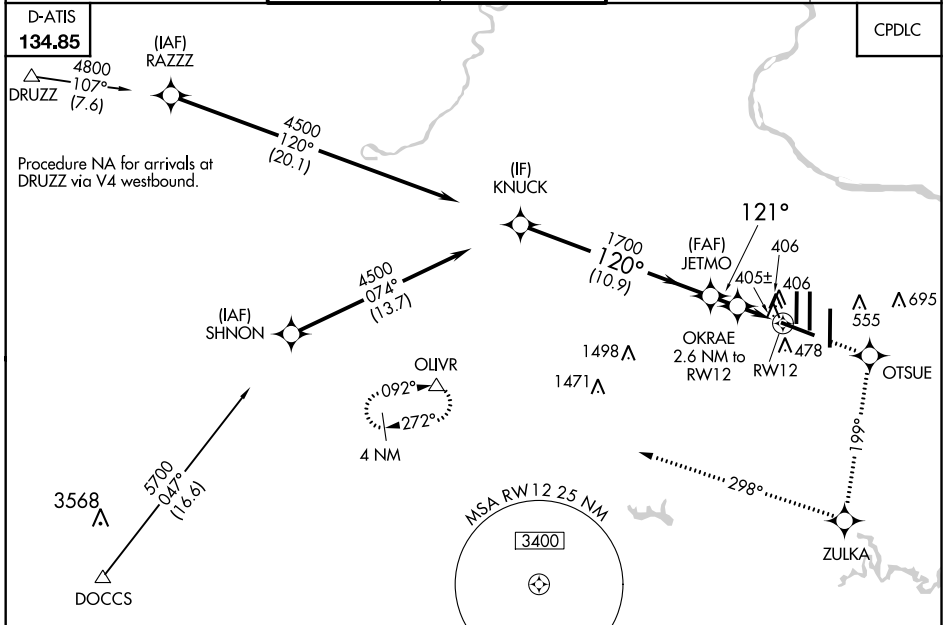
WASHINGTON DULLES INTL (IAD)

**▼** For inoperative MALS, increase LNAV Cat D visibility to RVR 6000.  
For uncompensated Baro-VNAV systems, LNAV/VNAV NA below -15°C (5°F) or above 48°C (118°F). DME/DME RNP-0.3 NA.

**MALS**

**MISSED APPROACH:** Climb to 4000 direct OTSUE and via 199° track to ZULKA and right turn via 298° track to OLIVR and hold.

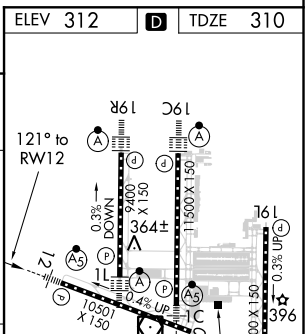
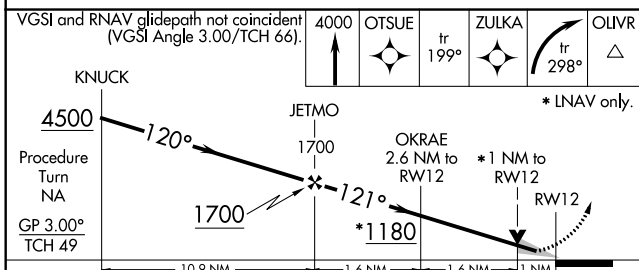
POTOMAC APP CON <b>120.45 306.925</b> (241°-330°) <b>128.525 306.925</b> (091°-240°) <b>126.1 338.25</b> (331°-090°)	DULLES TOWER <b>120.1 317.8</b> (Rwy 1R/19L) <b>120.25 348.6</b> (Rwy 1C/19C) <b>134.425 348.6</b> (Rwys 1L/19R and 12/30)	GND CON <b>121.9 317.8</b> (EAST) <b>121.625 348.6</b> (WEST)	CLNC DEL <b>135.7 317.8</b>
---	---	---	--------------------------------



NE-3, 08 OCT 2020 to 05 NOV 2020

NE-3, 08 OCT 2020 to 05 NOV 2020

ELEV 312	<b>D</b>	TDZE 310
----------	----------	----------



CATEGORY	A	B	C	D
LPV DA		510/18	200 (200-½)	
LNAV/VNAV DA		737/50	427 (500-1)	
LNAV MDA		680/24	370 (400-½)	680/50 370 (400-1)
CIRCLING	940-1	628 (700-1)	940-1¾ 628 (700-1¾)	940-2 628 (700-2)

TDZ/CL Rwys 1C, 1L, 1R, 12, 19C and 19R  
REL Rwy 30  
HIRL all Rwys