

APP CRS	Rwy ldg	<b>11089</b>
<b>191°</b>	TDZE	<b>272</b>
	Apt Elev	<b>312</b>

# RNAV (RNP) Z RWY 19C

WASHINGTON DULLES INTL (IAD)

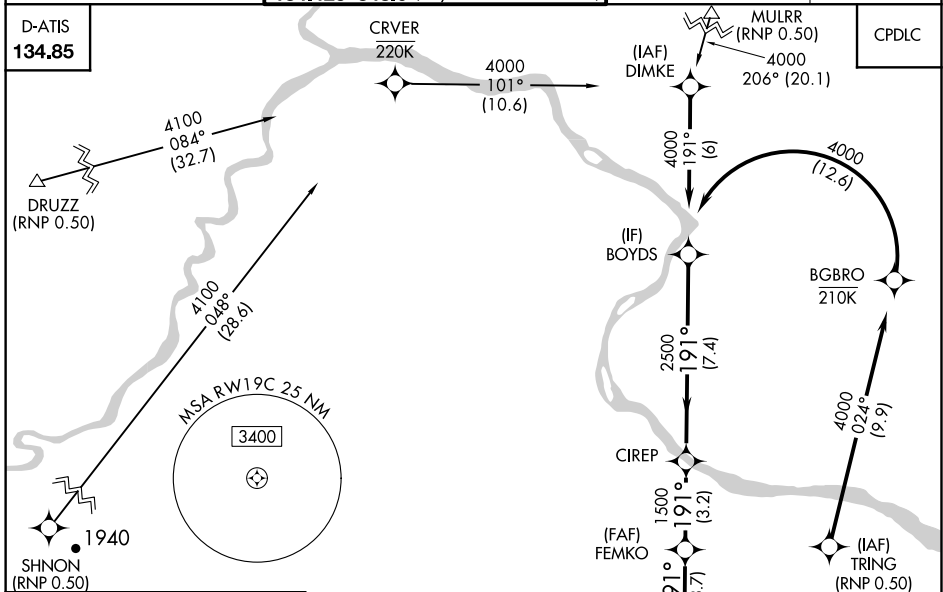
**GPS required.** For uncompensated Baro-VNAV systems, procedure NA below -14°C (6°F) or above 47°C (117°F). For inoperative ALSF, increase RNP 0.30 visibility to 1 3/4. Simultaneous approach authorized with ILS or LOC Rwy 19L, ILS Rwy 19L (Cat II). Use of FD or AP providing RNAV track guidance required during simultaneous operations.

ALSF-2



**MISSED APPROACH:** Climb to 4000 via track 191° to BOPAC and via track 265° to BLUES and hold.

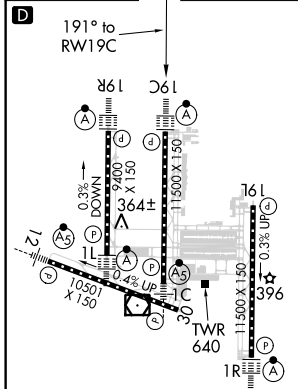
POTOMAC APP CON <b>120.45 306.925</b> (241°-330°) <b>128.525 306.925</b> (091°-240°) <b>126.1 338.25</b> (331°-090°)	DULLES TOWER <b>120.1 317.8</b> (Rwys 1R/19L) <b>120.25 348.6</b> (Rwy 1C/19C) <b>134.425 348.6</b> (Rwys 1L/19R and 12/30)	GND CON <b>121.9 317.8</b> (EAST) <b>121.625 348.6</b> (WEST)	CLNC DEL <b>135.7 317.8</b>
---	--	---	--------------------------------



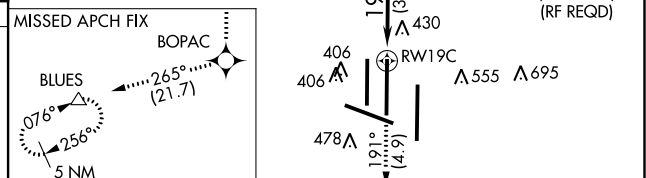
NE-3, 08 OCT 2020 to 05 NOV 2020

NE-3, 08 OCT 2020 to 05 NOV 2020

ELEV 312	TDZE 272
----------	----------



TDZ/CL 1C, 1L, 1R, 12, 19C and 19R  
REIL Rwy 30  
HIRL all Rwys



4000	tr 191°	BOPAC	tr 265°	BLUES	BOYDS	Procedure Turn NA
VGSi and RNAV glidepath not coincident (VGSi Angle 3.00/TCH 72).				FEMKO	CIREP	GP 3.00° TCH 54
RWY 19C		1500	2500	4000		
3.7 NM		3.2 NM	7.4 NM			
CATEGORY	A	B	C	D		
RNP 0.30 DA	740/60		468 (500-1 1/4)			

## AUTHORIZATION REQUIRED