

APP CRS	Rwy Idg	<b>11500</b>
<b>011°</b>	TDZE	<b>312</b>
	Apt Elev	<b>312</b>

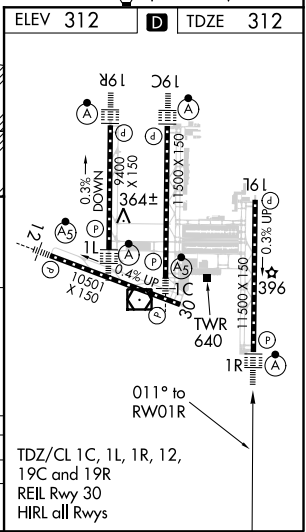
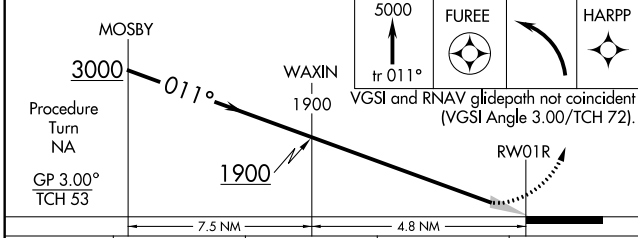
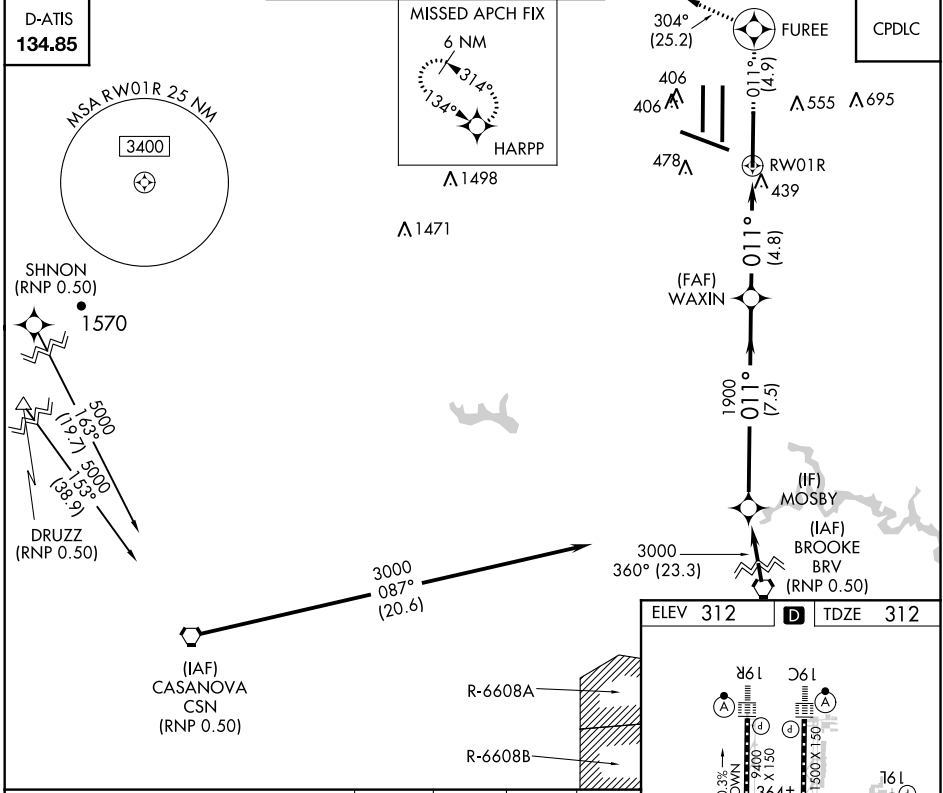
# RNAV (RNP) Z RWY 1R

WASHINGTON DULLES INTL (IAD)

**▼** GPS required. For uncompensated Baro-VNAV systems, procedure NA below -14°C (6°F) or above 48°C (119°F). For inoperative ALSF-2, increase RNP 0.30 visibility to 1 3/4. Simultaneous approach authorized with ILS or LOC/DME Rwy 1L, ILS Rwy 1L (Cat III), ILS Rwy 1L (Cat III). Use of FD or AP providing RNAV track guidance required during simultaneous operations.

**ALSF-2**  
 MISSED APPROACH: Climb to 5000 via track 011° to FUREE and left turn direct HARPP and hold.

POTOMAC APP CON <b>120.45 306.925</b> (241°-330°) <b>128.525 306.925</b> (091°-240°) <b>126.1 338.25</b> (331°-090°)	DULLES TOWER <b>120.1 317.8</b> (Rwy 1R/19L) <b>120.25 348.6</b> (Rwy 1C/19C) <b>134.425 348.6</b> (Rwys 1L/19R and 12/30)	GND CON <b>121.9 317.8</b> (EAST) <b>121.625 348.6</b> (WEST)	CLNC DEL <b>135.7 317.8</b>
---	---	---	--------------------------------



CATEGORY	A	B	C	D
RNP 0.30 DA	819/60 507 (600-1 1/4)			

**AUTHORIZATION REQUIRED**

NE-3, 08 OCT 2020 to 05 NOV 2020

NE-3, 08 OCT 2020 to 05 NOV 2020