


WAAS CH 97509 W01B	APP CRS 011°	Rwy Idg 11500 TDZE 286 Apt Elev 312
--	------------------------	--

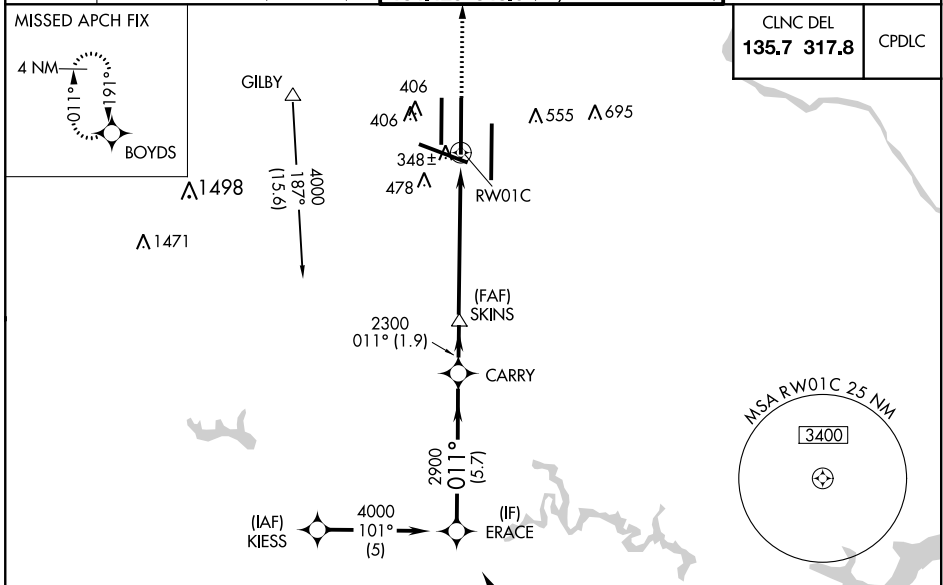
RNAV (GPS) Y RWY 1C

WASHINGTON DULLES INTL (IAD)

▼ For uncompensated Baro-VNAV systems, LNAV/VNAV NA below -15°C (5°F) or above 48°C (118°F). DME/DME RNP-0.3 NA. Simultaneous approach authorized with ILS or LOC/DME Rwy 1L, ILS Rwy 1L (Cat II), ILS Rwy 1L (Cat III), ILS or LOC Rwy 1R, ILS Rwy 1R (Cat II), ILS Rwy 1R (Cat III). LNAV procedure NA during simultaneous operations. Use of FD or AP providing RNAV track guidance required during simultaneous operations.
 **RVR 1800 authorized with use of FD or AP or HUD to DA.

MALSR

 MISSED APPROACH:
 Climb to 3000 direct
 BOYDS and hold.

D-ATIS 134.85	POTOMAC APP CON 120.45 306.925 (241°-330°) 128.525 306.925 (091°-240°) 126.1 338.25 (331°-090°)	DULLES TOWER 120.1 317.8 (Rwy 1R/19L) 120.25 348.6 (Rwy 1C/19C) 134.425 348.6 (Rwys 1L/19R and 12/30)	GND CON 121.9 317.8 (EAST) 121.625 348.6 (WEST)
-------------------------	---	---	---

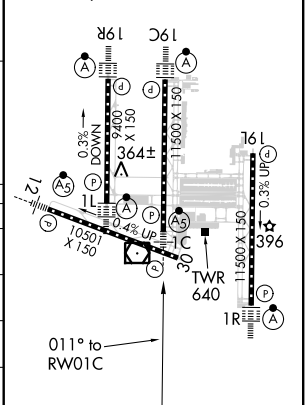


CLNC DEL 135.7 317.8	CPDLC
--------------------------------	-------



ELEV 312	D	TDZE 286
----------	----------	----------

TDZ/CL Rwys 1C, 1L, 1R, 12, 19C, and 19R
 REIL Rwy 30
 HIRL all Rwys



ERACE	VGSi and RNAV glidepath not coincident (VGSi Angle 3.00/TCH 70).			3000	BOYDS
4000	011°	CARRY	2900	2300	* 1.7 NM to RWY 1C
Procedure Turn NA					
GP 3.00°					* LNAV only.
TCH 54					
	5.7 NM	1.9 NM	4.4 NM		

CATEGORY	A	B	C	D
LPV DA **	486/24 200 (200-½)			
LNAV/VNAV DA	801/60 515 (600-1½)			
LNAV MDA	900/24 614 (600-½)	900/60 614 (600-1½)		900-1½ 614 (600-1½)
CIRCLING	940-1 628 (700-1)	940-1¾ 628 (700-1¾)		940-2 628 (700-2)

NE-3, 08 OCT 2020 to 05 NOV 2020

NE-3, 08 OCT 2020 to 05 NOV 2020