

WAAS CH 56409 W01A	APP CRS 011°	Rwy ldg 11500 TDZE 312 Apt Elev 312
---------------------------------	------------------------	--

RNAV (GPS) Y RWY 1R

WASHINGTON DULLES INTL (IAD)

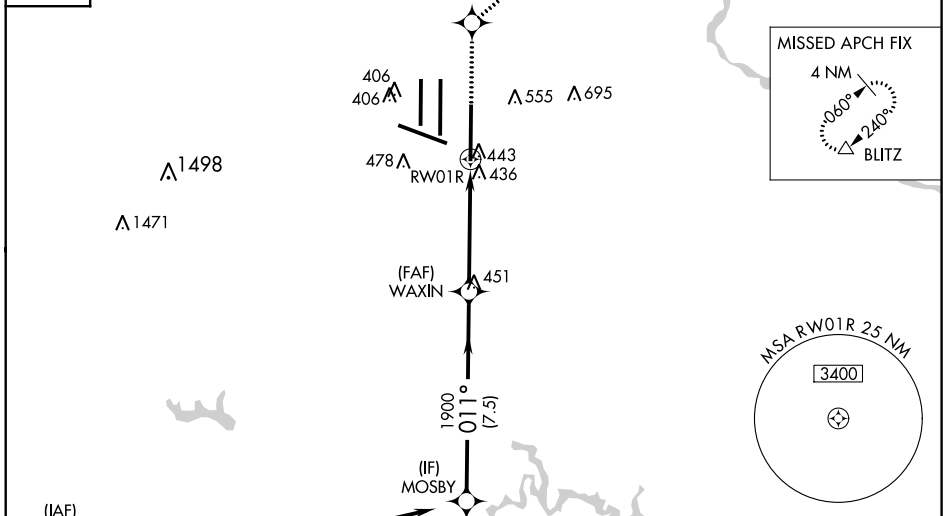
▼ For uncompensated Baro-VNAV systems, LNAV/VNAV NA below -15°C (5°F) or above 48°C (118°F). DME/DME RNP-0.3 NA. Simultaneous approach authorized with ILS or LOC/DME Rwy 1L, ILS Rwy 1L (Cat II), ILS Rwy 1L (Cat III). LNAV procedure NA during simultaneous operations. Use of FD or AP providing RNAV track guidance required during simultaneous operations.

ALSF-2
 MISSED APPROACH: Climb to 3000 direct FUREE and on 060° track to BLITZ and hold.

POTOMAC APP CON 120.45 306.925 (241°-330°) 128.525 306.925 (091°-240°) 126.1 338.25 (331°-090°)	DULLES TOWER 120.1 317.8 (Rwys 1R/19L) 120.25 348.6 (Rwy 1C/19C) 134.425 348.6 (Rwys 1L/19R and 12/30)	GND CON 121.9 317.8 (EAST) 121.625 348.6 (WEST)	CLNC DEL 135.7 317.8
---	--	---	--------------------------------

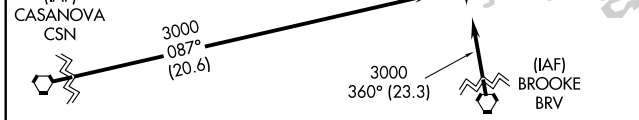
D-ATIS
134.85

CPDLC

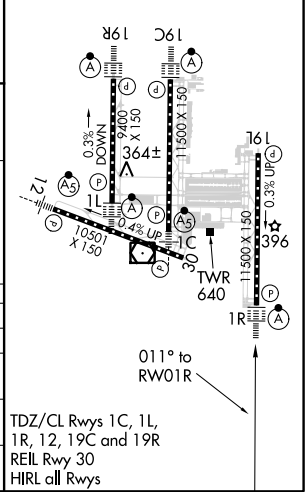


NE-3, 08 OCT 2020 to 05 NOV 2020

NE-3, 08 OCT 2020 to 05 NOV 2020



ELEV 312	D	TDZE 312
----------	----------	----------



MOSBY	VGSI and RNAV glidepath not coincident (VGSI Angle 3.00/TCH 72).			
3000	3000 FUREE tr 060° BLITZ			
Procedure Turn NA	* 1.3 NM to RWY 1R			
GP 3.00° TCH 53	* LNAV only.			
	7.5 NM	3.5 NM	1.3	
CATEGORY	A	B	C	D
LPV DA		512/18	200 (200-½)	
LNAV/VNAV DA		764/50	452 (500-1)	
LNAV MDA	800/24	488 (500-½)	800/40 488 (500-¾)	800/50 488 (500-1)
CIRCLING	940-1	628 (700-1)	940-1¾ 628 (700-1¾)	940-2 628 (700-2)

TDZ/CL Rwys 1C, 1L, 1R, 12, 19C and 19R
REL Rwy 30
HIRL all Rwys