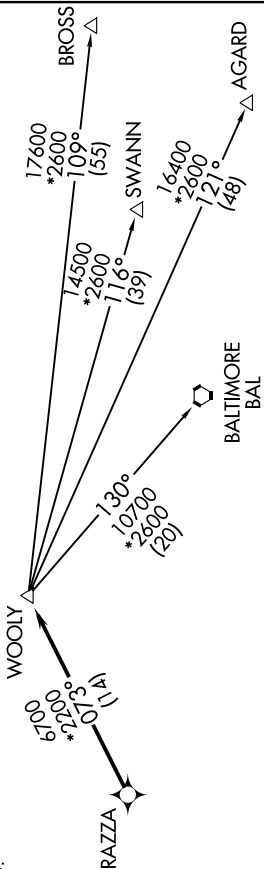


WOOLY ONE DEPARTURE (RNAV)

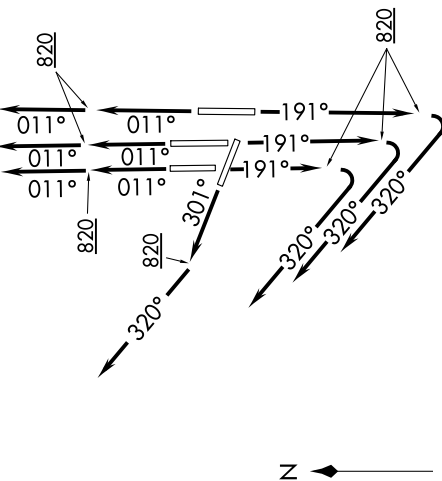
NE-3, 08 OCT 2020 to 05 NOV 2020

- D-ATIS 134.85
- CLNC DEL 135.7 317.8
- CPDIC
- GND CON
- 121.9 317.8 (EAST)
- 121.625 348.6 (WEST)
- DULLES TOWER
- 120.1 317.8 (Rwy 1R/19L)
- 120.25 348.6 (Rwy 1C/19C)
- 134.425 348.6 (Rwys 1L/19R, 12/30)
- POTOMAC DEP CON
- 125.05 350.2

TAKEOFF MINIMUMS:
Rwys 1L/C/R, 19L/C/R, 30:
Standard with minimum climb
of 500' per NM to 820.



- NOTE: RNAV 1.
- NOTE: DME/DME/IRU or GPS required.
- NOTE: RADAR required.
- NOTE: Turbojets only.



NOTE: Chart not to scale.

WOOLY ONE DEPARTURE (RNAV)

NE-3, 08 OCT 2020 to 05 NOV 2020

TOP ALTITUDE:
3000

DEPARTURE ROUTE DESCRIPTION

TAKEOFF RUNWAYS 1L/C/R: Climb heading 011° to 820, then on heading 011° or as assigned by ATC, expect RADAR vectors to RAZZA, thence

TAKEOFF RUNWAYS 19L/C/R: Climb heading 191° to 820, then on heading 320° or as assigned by ATC, expect RADAR vectors to RAZZA, thence

TAKEOFF RUNWAY 30: Climb heading 301° to 820, then on heading 320° or as assigned by ATC, expect RADAR vectors to RAZZA, thence

. . . . on track 073° to WOOLY, then on assigned transition. Maintain 3000. Expect clearance to filed altitude within ten (10) minutes after departure.

- AGARD TRANSITION (WOOLY1.AGARD)
- BALTIMORE TRANSITION (WOOLY1.BAL)
- BROSS TRANSITION (WOOLY1.BROSS)
- SWANN TRANSITION (WOOLY1.SWANN)