

APP CRS <b>317°</b>	Rwy Idg TDZE Apt Elev	<b>3900</b> <b>25</b> <b>26</b>
------------------------	-----------------------------	---------------------------------------

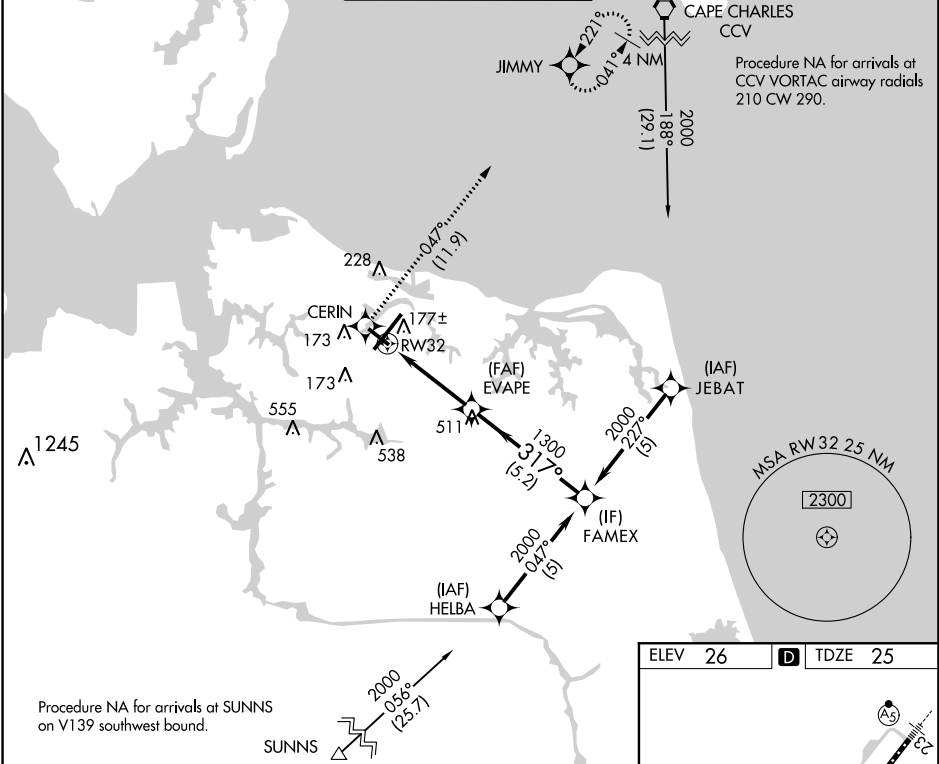
# RNAV (GPS) RWY 32

NORFOLK INTL (ORF)

**▽** DME/DME RNP-0.3 NA. Helicopter visibility reduction below 3/4 SM NA.

**▲** MISSED APPROACH: Climb to 2000 direct CERIN and on track 047° to JIMMY and hold.

ATIS <b>127.15</b>	NORFOLK APP CON <b>118.9 353.7</b>	NORFOLK TOWER <b>120.8 257.8</b>	GND CON <b>121.9</b>	CLNC DEL <b>118.5</b>
-----------------------	---------------------------------------	-------------------------------------	-------------------------	--------------------------



NE-3, 05 NOV 2020 to 03 DEC 2020

NE-3, 05 NOV 2020 to 03 DEC 2020

	Visual Segment - Obstacles.			
	CERIN	tr 047°	JIMMY	FAMEX
2000	Visual Segment - Obstacles.			
	RWY 32			
	1.2 NM	2.6 NM	5.2 NM	
CATEGORY	A	B	C	D
LNNAV MDA	440-1	415 (500-1)	440-1½	415 (500-1½)
CIRCLING	480-1	540-1	540-1½	900-2¾
	454 (500-1)	514 (600-1)	514 (600-1½)	874 (900-2¾)

