

# RIVER VISUAL RWY 5

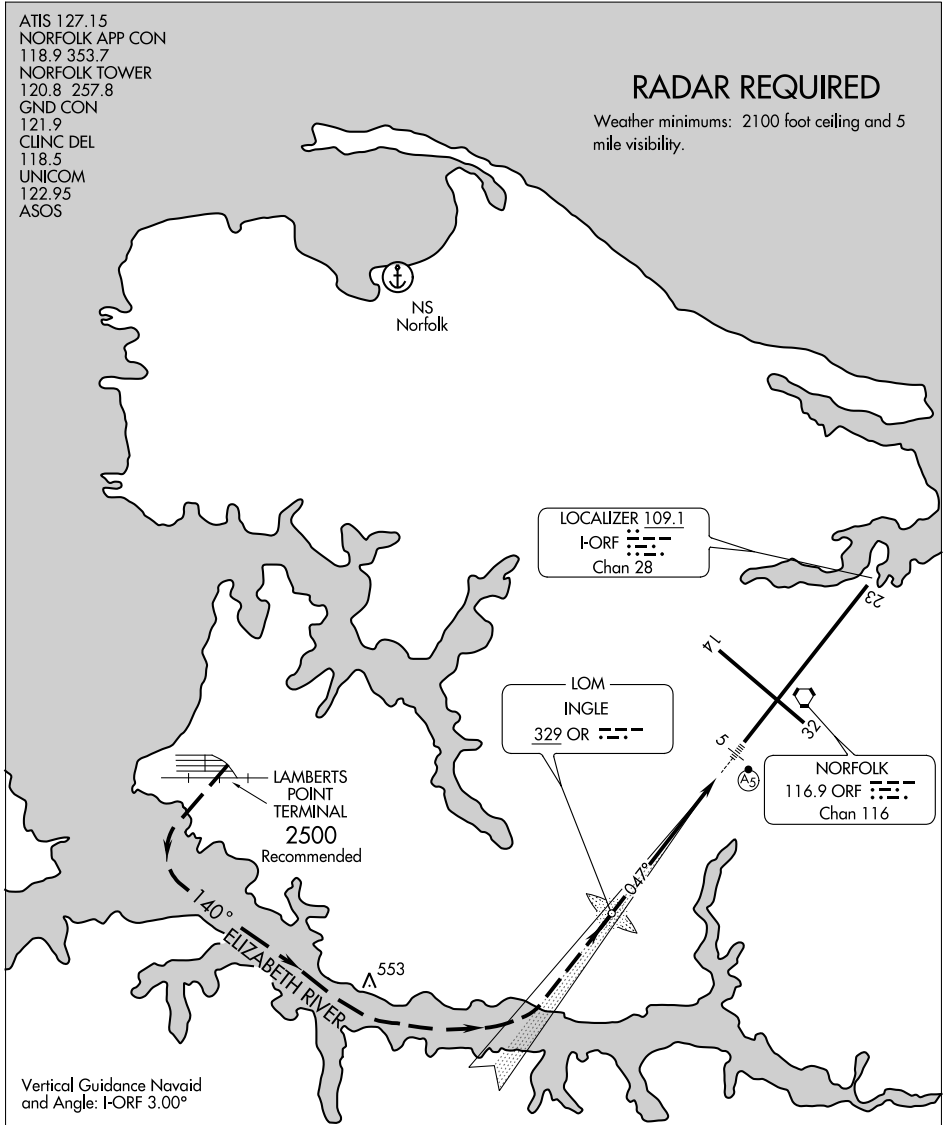
AL-291 (FAA)

NORFOLK INTL (ORF)  
NORFOLK, VIRGINIA

ATIS 127.15  
 NORFOLK APP CON  
 118.9 353.7  
 NORFOLK TOWER  
 120.8 257.8  
 GND CON  
 121.9  
 CLINC DEL  
 118.5  
 UNICOM  
 122.95  
 ASOS

## RADAR REQUIRED

Weather minimums: 2100 foot ceiling and 5 mile visibility.



NE-3, 05 NOV 2020 to 03 DEC 2020

NE-3, 05 NOV 2020 to 03 DEC 2020

Vertical Guidance Navaid  
and Angle: I-ORF 3.00°

|      |   |   |   |   |   |
|------|---|---|---|---|---|
| 1 NM | 2 | 3 | 4 | 5 | 6 |
|------|---|---|---|---|---|



**RIVER VISUAL RWY 5**  
PROCEDURE NOT AUTHORIZED AT NIGHT

# RIVER VISUAL RWY 5

36°54'N-76°12'W

NORFOLK, VIRGINIA  
NORFOLK INTL (ORF)