

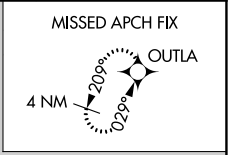
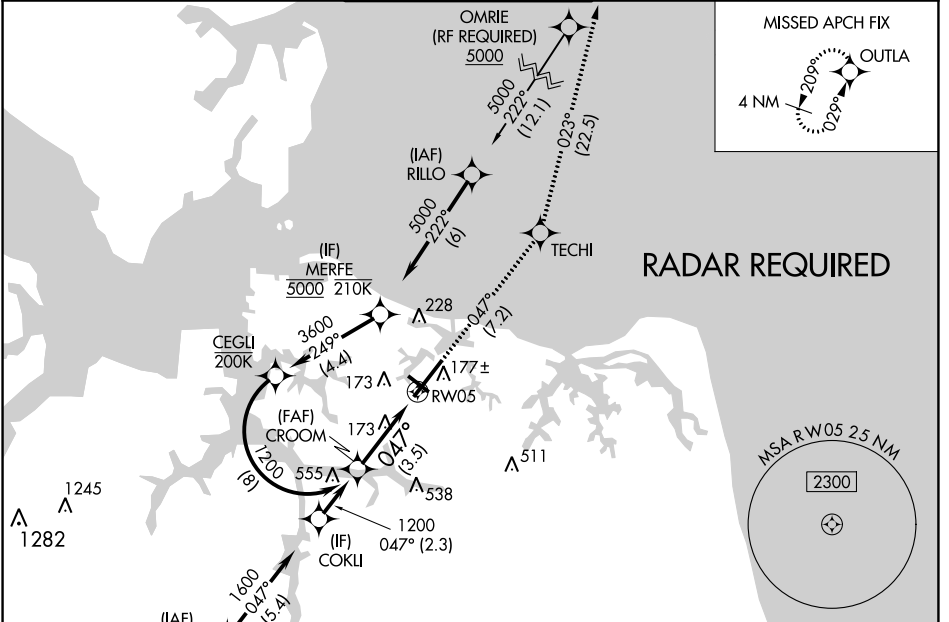
APP CRS	Rwy Idg	7809
047°	TDZE	26
	Apt Elev	27

RNAV (RNP) Y RWY 5

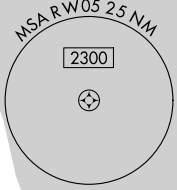
NORFOLK INTL (O.R.F.)

For uncompensated Baro-VNAV systems, LNAV/VNAV NA below -9°C (16°F) or above 54°C (130°F). GPS required.	MALSR 	MISSED APPROACH: Climb to 2000 on track 047° to TECHI and on track 023° to OUTLA and hold.

ATIS 127.15	NORFOLK APP CON 118.9 353.7	NORFOLK TOWER 120.8 257.8	GND CON 121.9	CLNC DEL 118.5
-----------------------	---------------------------------------	-------------------------------------	-------------------------	--------------------------



RADAR REQUIRED

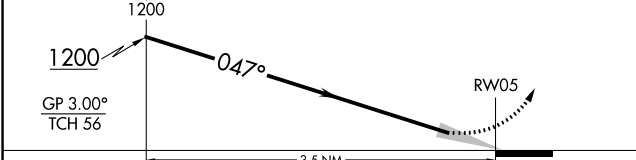


NE-3, 05 NOV 2020 to 03 DEC 2020

NE-3, 05 NOV 2020 to 03 DEC 2020



See planview for multiple IF locations.	2000	tr 047°	TECHI	tr 023°	OUTLA
---	------	---------	-------	---------	-------



CATEGORY	A	B	C	D
RNP 0.10 DA		350/26	324 (400-½)	
RNP 0.30 DA		454/40	428 (500-¾)	

AUTHORIZATION REQUIRED

