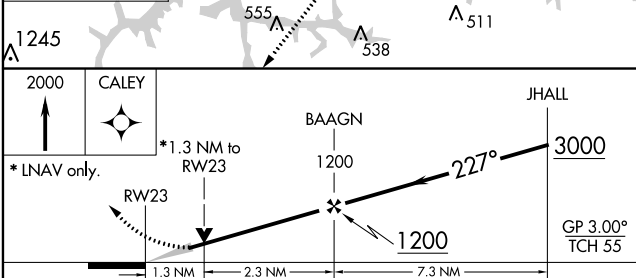
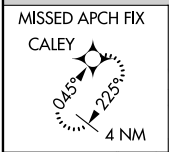
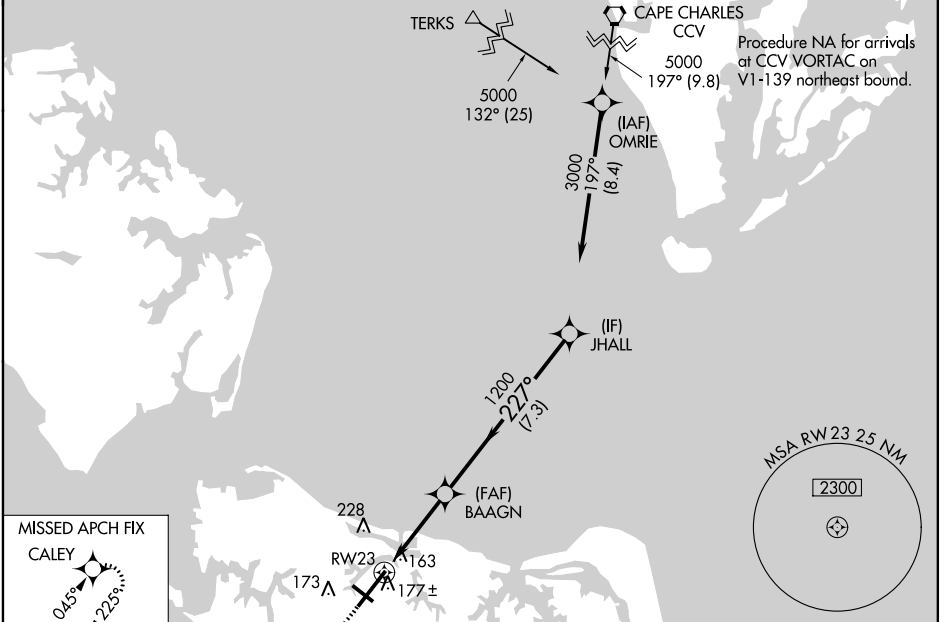


WAAS CH <b>56322</b> <b>W23A</b>	APP CRS <b>227°</b>	Rwy Idg TDZE Apt Elev	<b>8995</b> <b>26</b> <b>27</b>
--	------------------------	-----------------------------	---------------------------------------

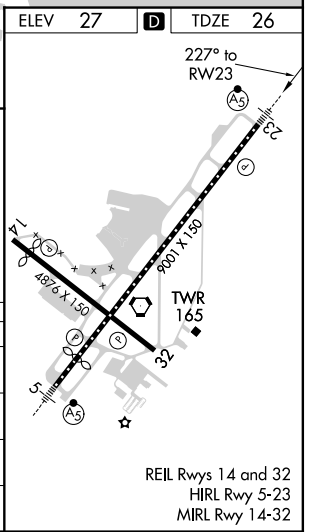
# RNAV (GPS) Z RWY 23

NORFOLK INTL (ORF)

<p>For uncompensated Baro-VNAV systems, LNAV/VNAV NA below -9°C (16°F) or above 54°C (130°F). DME/DME RNP-0.3 NA.</p>	<p>MALSR</p>			<p>MISSED APPROACH: Climb to 2000 direct CALEY and hold.</p>	
	<p>ATIS <b>127.15</b></p>	<p>NORFOLK APP CON <b>118.9 353.7</b></p>	<p>NORFOLK TOWER <b>120.8 257.8</b></p>	<p>GND CON <b>121.9</b></p>	<p>CLNC DEL <b>118.5</b></p>



CATEGORY	A	B	C	D
LPV DA		226-1/2	200 (200-1/2)	
LNAV/VNAV DA		403-3/4	377 (400-3/4)	
LNAV MDA	480-1/2	454 (500-1/2)	480-7/8	454 (500-7/8)
CIRCLING	480-1 453 (500-1)	540-1 513 (600-1)	540-1 1/2 513 (600-1 1/2)	900-2 3/4 873 (900-2 3/4)



NE-3, 05 NOV 2020 to 03 DEC 2020

NE-3, 05 NOV 2020 to 03 DEC 2020