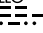

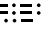


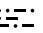
TERKS TWO ARRIVAL

NORFOLK APP CON
 118.9 353.7
 KNGU ATIS
 118.425 342.0
 KNTU ATIS
 317.6
 ORF INTL ATIS
 127.15

MONTEBELLO
 115.3 MOL 
 Chan 100
 N37°54.03'-W79°06.41'

HARCUM
 108.8 HCM 
 Chan 25
 N37°26.92'-W76°42.68'

CAPE CHARLES
 112.2 CCV 
 Chan 59
 N37°20.85'-W75°59.86'

FLAT ROCK
 113.3 FAK 
 Chan 80
 N37°31.71'-W77°49.69'

TURBOJET VERTICAL NAVIGATION PLANNING INFORMATION

Expect clearance to cross at 14,000'.

RUSSL
 N37°29.82'-W77°22.14'

TURBOJET VERTICAL NAVIGATION PLANNING INFORMATION

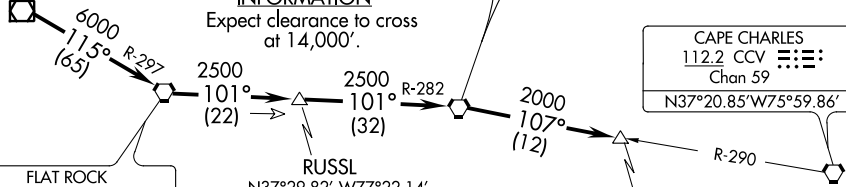
Expect clearance to cross at 16,000'.

TURBOJET VERTICAL NAVIGATION PLANNING INFORMATION

Expect clearance to cross 20 NM west at FL 210.

NOTE: For aircraft at or above 14,000' only.

NOTE: Chart not to scale.



NORFOLK NS (CHAMBERS FIELD)

NORFOLK INTL

HAMPTON ROADS

OCEANA NAS/ APOLLO SOUCEK FIELD

SUFFOLK EXECUTIVE

CHESAPEAKE RGNL

From over MOL VOR/DME via R-115 and FAK R-297 to FAK VORTAC, then via FAK R-101 and HCM R-282 to HCM VORTAC, then via HCM R-107 and CCV R-290 to TERKS INT. Expect radar vectors to the final approach course after the TERKS INT.

TERKS TWO ARRIVAL

NE-3, 05 NOV 2020 to 03 DEC 2020

NE-3, 05 NOV 2020 to 03 DEC 2020