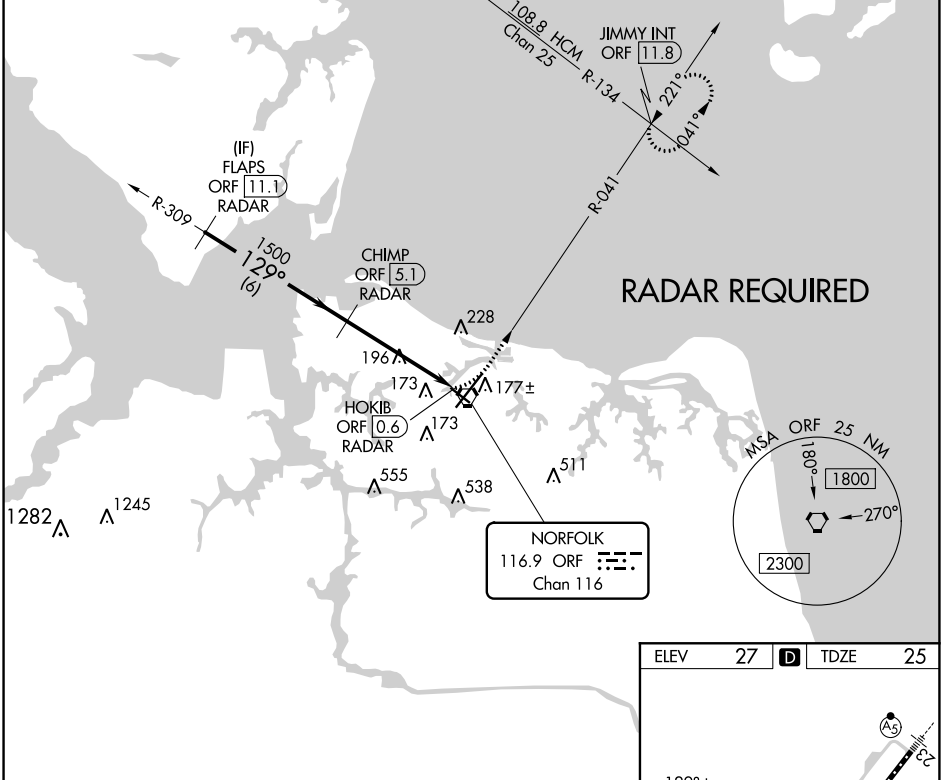


VORTAC ORF <b>116.9</b> Chan <b>116</b>	APP CRS <b>129°</b>	Rwy ldg TDZE Apt Elev	<b>4300</b> <b>25</b> <b>27</b>
---	------------------------	-----------------------------	---------------------------------------

# VOR RWY 14

NORFOLK INTL (ORF)

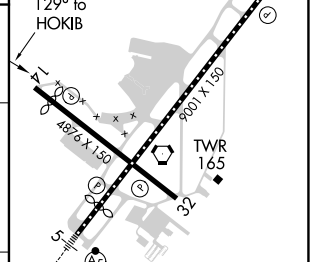
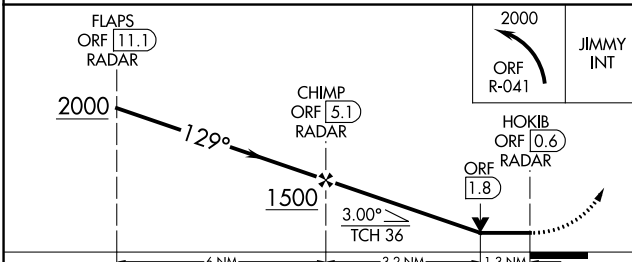
<p><b>▽</b> Rwy 14 helicopter visibility reduction below 3/4 SM NA. <b>▲</b> DME required.</p>		<p>MISSED APPROACH: Climbing left turn to 2000 on ORF VORTAC R-041 to JIMMY INT/ORF 11.8 DME and hold.</p>		
ATIS <b>127.15</b>	NORFOLK APP CON <b>118.9 353.7</b>	NORFOLK TOWER <b>120.8 257.8</b>	GND CON <b>121.9</b>	CLNC DEL <b>118.5</b>



NE-3, 05 NOV 2020 to 03 DEC 2020

NE-3, 05 NOV 2020 to 03 DEC 2020

ELEV 27	<b>D</b>	TDZE 25
---------	----------	---------



CATEGORY	A	B	C	D
S-14	460-1	435 (500-1)	460-1 1/4	435 (500-1 1/4)
<b>C</b> CIRCLING	480-1 453 (500-1)	540-1 513 (600-1)	540-1 1/2 513 (600-1 1/2)	900-2 3/4 873 (900-2 3/4)

REIL Rwy 14 and 32  
HIRL Rwy 5-23  
MIRL Rwy 14-32