

VORTAC RIC <b>114.1</b> Chan <b>88</b>	APP CRS <b>188°</b>	Rwy Idg TDZE <b>168</b> Apt Elev <b>168</b>	<b>6607</b>
--	------------------------	---	-------------

# VOR RWY 20

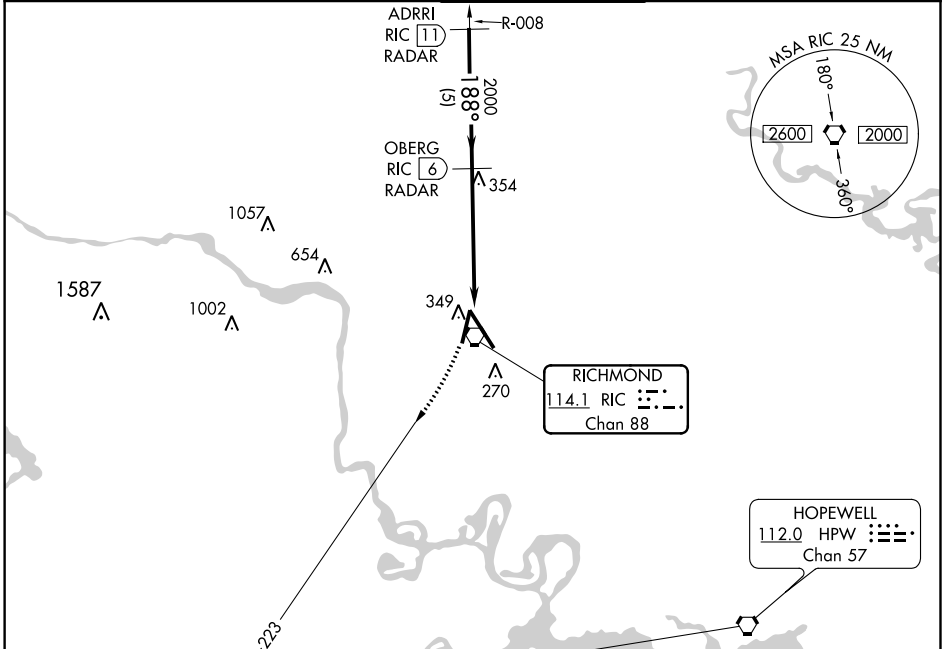
RICHMOND INTL (RIC)

RADAR required for procedure entry. DME or RADAR required.

MISSED APPROACH: Climbing right turn to 2000 on RIC R-223 to MATOX INT/RIC 16.3 DME and hold.

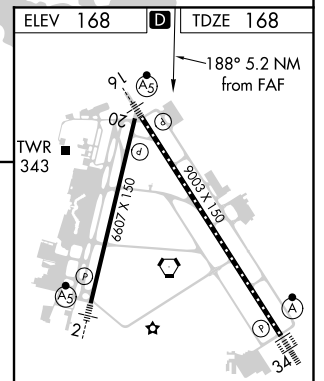
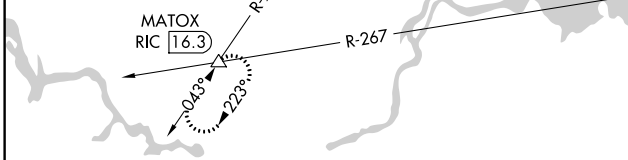
▼ Rwy 20 helicopter visibility reduction below 3/4 SM NA.

ATIS <b>119.15 263.025</b>	POTOMAC APP CON <b>126.4 282.375</b> (001°-185°) <b>126.75 307.2</b> (186°-360°)	RICHMOND TOWER <b>121.1 257.8</b>	GND CON <b>121.9 348.6</b>	CLNC DEL <b>127.55 348.6</b>
-------------------------------	--	--------------------------------------	-------------------------------	---------------------------------



NE-3, 05 NOV 2020 to 03 DEC 2020

NE-3, 05 NOV 2020 to 03 DEC 2020



2000 RIC R-223	MATOX △	VGSi and descent angles not coincident (VGSi Angle 3.00/TCH 49).	
RIC 0.9 VORTAC	RIC 2.2	OBERG RIC (6) RADAR	ADIRRI RIC (11) RADAR
188°		2000	
≤ 3.26° TCH 50			
1.4		3.8 NM	
		5 NM	

CATEGORY	A	B	C	D																	
S-20	660-1 492 (500-1)		660-1 3/8 492 (500-1 3/8)																		
CIRCLING	660-1 492 (500-1)		700-1 1/2 532 (600-1 1/2)	720-2 552 (600-2)																	
<table border="1"> <tr> <td colspan="5">FAF to MAP 5.2 NM</td> </tr> <tr> <td>Knots</td> <td>60</td> <td>90</td> <td>120</td> <td>150</td> <td>180</td> </tr> <tr> <td>Min:Sec</td> <td>5:12</td> <td>3:28</td> <td>2:36</td> <td>2:05</td> <td>1:44</td> </tr> </table>					FAF to MAP 5.2 NM					Knots	60	90	120	150	180	Min:Sec	5:12	3:28	2:36	2:05	1:44
FAF to MAP 5.2 NM																					
Knots	60	90	120	150	180																
Min:Sec	5:12	3:28	2:36	2:05	1:44																