

VORTAC RIC <b>114.1</b> Chan <b>88</b>	APP CRS <b>323°</b>	Rwy Idg <b>9003</b> TDZE <b>161</b> Apt Elev <b>167</b>
--	------------------------	---

# VOR RWY 34

RICHMOND INTL (RIC)

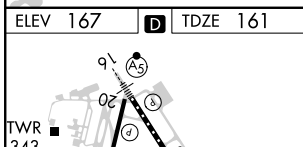
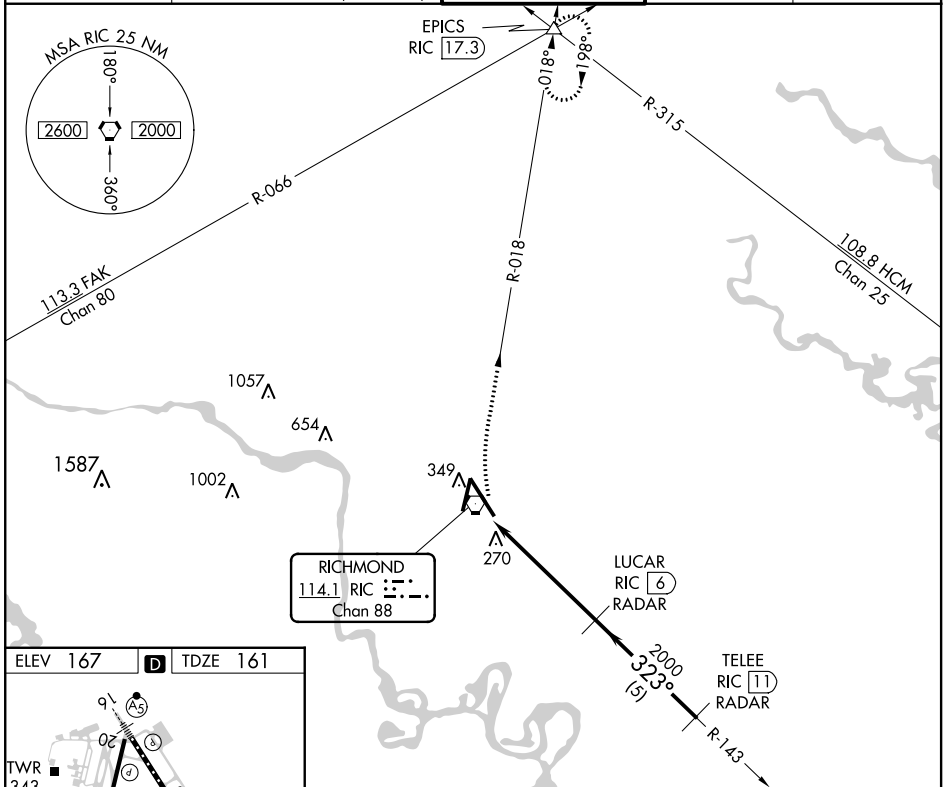
DME or RADAR required. RADAR required for procedure entry.

ALSF-2

MISSED APPROACH: Climbing right turn to 2000 via RIC R-018 to EPICS INT and hold.

For inop ALS, increase S-34 Cat C/D visibility to RVR 5500.

ATIS <b>119.15 263.025</b>	POTOMAC APP CON <b>126.4 282.375</b> (001°-185°) <b>126.75 307.2</b> (186°-360°)	RICHMOND TOWER <b>121.1 257.8</b>	GND CON <b>121.9 348.6</b>	CLNC DEL <b>127.55 348.6</b>
-------------------------------	--	--------------------------------------	-------------------------------	---------------------------------



ELEV 167	TDZE 161	<p>2000 EPICS VGSI and descent angles not coincident (VGSI Angle 3/00/TCH 79).</p> <p>RIC R-018</p> <p>LUCAR RIC 6 RADAR</p> <p>TELEE RIC 11 RADAR</p>			
<p>323° 5.3 NM from FAF</p> <p>323°</p> <p>323°</p> <p>2000</p> <p>3.19° TCH 55</p>		<p>RIC VORTAC RIC 0.8</p> <p>RIC 1.7</p> <p>RIC 1.7</p> <p>RIC 1.7</p>			
CATEGORY	A	B	C	D	
S-34	540/24 379 (400-½)		540/40 379 (400-¾)	540/50 379 (400-1)	
CIRCLING	660-1 493 (500-1)		700-1½ 533 (600-1½)	720-2 553 (600-2)	

NE-3, 05 NOV 2020 to 03 DEC 2020

NE-3, 05 NOV 2020 to 03 DEC 2020