

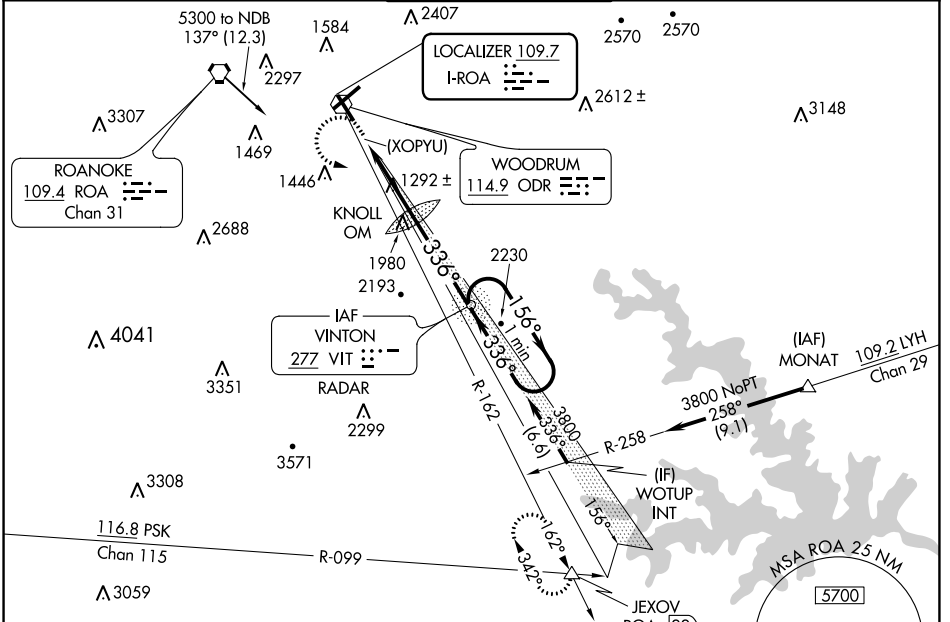
LOC I-ROA 109.7	APP CRS 336°	Rwy ldg 5810 TDZE 1160 Apt Elev 1175
---------------------------	------------------------	--

ILS or LOC RWY 34

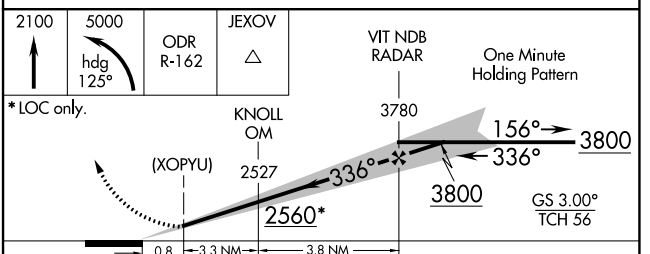
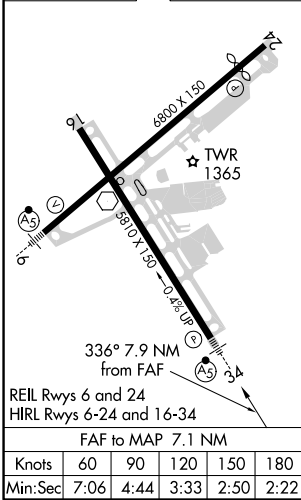
ROANOKE-BLACKSBURG RGNL/WOODRUM FIELD (ROA)

<p>-13°C</p>	Circling NA northwest of Rwy 6-24. ADF or RADAR required. For inop MALSRL, increase S-ILS 34 all Cats visibility ½ mile and S-LOC 34 Cat B ¼ mile, Cats C/D ⅝ mile. Inop table does not apply to S-LOC 34 Cat A.	MALSRL 	MISSED APPROACH: Climb to 2100 then climbing left turn to 5000 on heading 125° and ODR R-162 to JEXOV INT/ROA 22 DME and hold.

ATIS 132.375	ROANOKE APP CON 126.9 339.8	ROANOKE TOWER 118.3 257.8	GND CON 121.9 257.8	CLNC DEL 119.7
------------------------	---------------------------------------	-------------------------------------	-------------------------------	--------------------------



ELEV 1175		TDZE 1160
-----------	--	-----------



CATEGORY	A	B	C	D
S-ILS 34	1810-1¾ 650 (700-1¾)		1913-2¼ 753 (700-2¼)	
S-LOC 34	1980-1	820 (900-1)	1980-1 ⅞	820 (900-1 ⅞)
CIRCLING	1980-1 805 (900-1)	1980-1 ¼ 805 (900-1 ¼)	2420-3 1245 (1300-3)	2800-3 1625 (1700-3)

ILS or LOC RWY 34

NE-3, 05 NOV 2020 to 03 DEC 2020

NE-3, 05 NOV 2020 to 03 DEC 2020