

APP CRS	Rwy Idg	6010
238°	TDZE	1170
	Apt Elev	1175

RNAV (RNP) Z RWY 24

ROANOKE-BLACKSBURG RGNL/WOODRUM FIELD (R.O.A)

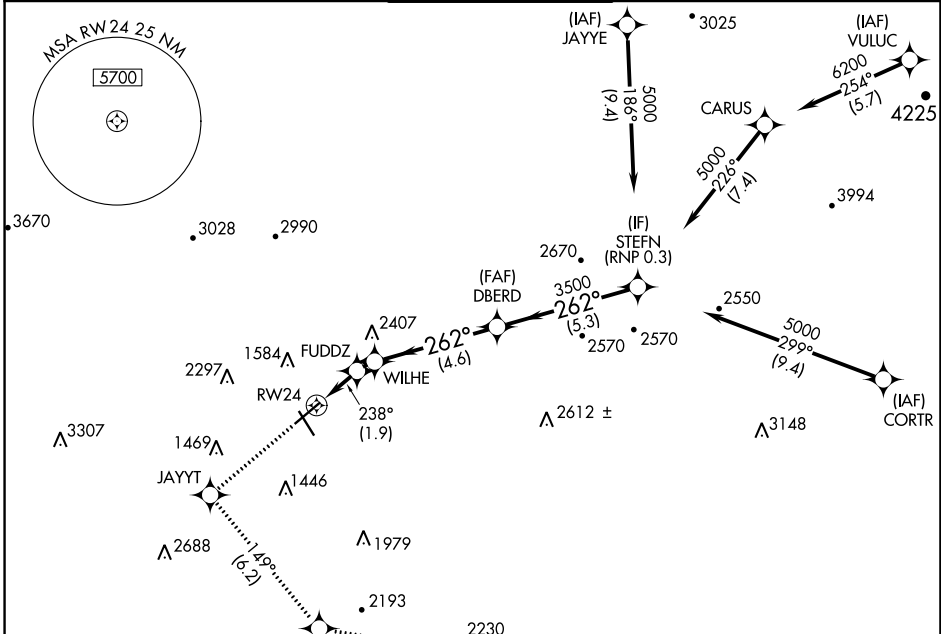
RNP AR APCH. RF required.

V For uncompensated Baro-VNAV systems, procedure NA below -14°C or above 54°C.

33 -13°C

MISSED APPROACH: Climb to 4000 direct JAYYT and on track 149° to TPUCK and on track 107° to MONAT and hold. # Missed approach requires minimum climb of 217 feet per NM to 3200.

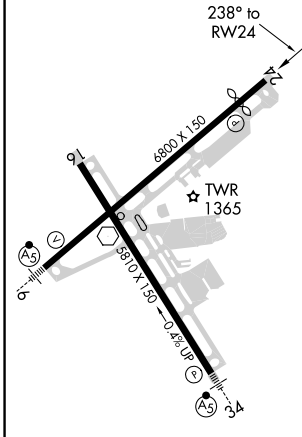
ATIS	ROANOKE APP CON	ROANOKE TOWER	GND CON	CLNC DEL
132.375	126.9 339.8	118.3 257.8	121.9 257.8	119.7



NE-3, 05 NOV 2020 to 03 DEC 2020

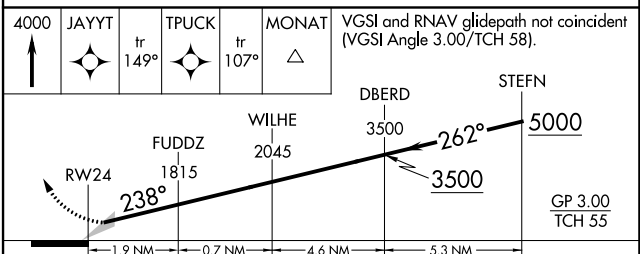
NE-3, 05 NOV 2020 to 03 DEC 2020

ELEV 1175	D	TDZE 1170
-----------	----------	-----------



REIL Rws 6 and 24
HIRL Rws 6-24 and 16-34

4000	JAYYT	tr 149°	TPUCK	tr 107°	MONAT	VGSI and RNAV glidepath not coincident (VGSI Angle 3.00/TCH 58).
↑	◆		◆		△	



CATEGORY	A	B	C	D
# RNP 0.15 DA		1491-1	321 (400-1)	
RNP 0.30 DA		1579-1 1/8	409 (500-1 1/8)	

AUTHORIZATION REQUIRED

RNAV (RNP) Z RWY 24