

FRDMM FIVE ARRIVAL (RNAV) Arrival Routes

WASHINGTON, DC

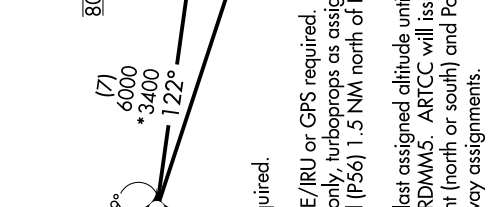
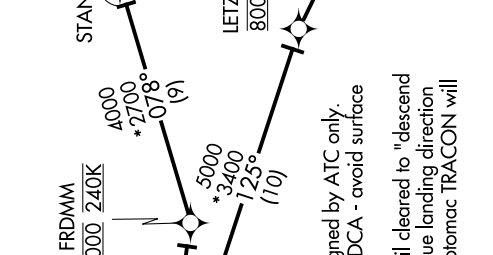
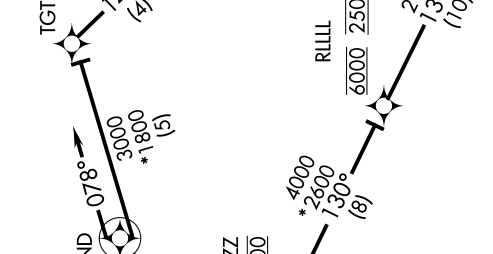
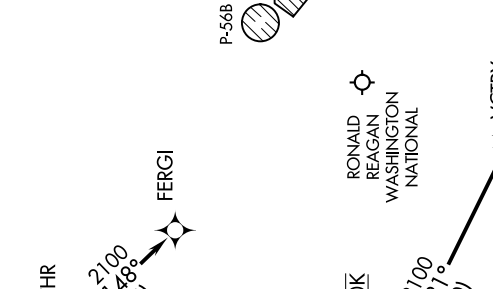
NE-3, 05 NOV 2020 to 03 DEC 2020

POTOMAC APP CON  
118.675 323.175  
DCA D-ATIS  
132.65  
KADW D-ATIS  
133.675 251.05  
KDAAA AAF ATIS  
128.175

P-568

P-56A

JOINT BASE  
ANDREWS



FRDMM 8000 240K

ALWYZ 10000

STAND 4000

LETZ 8000

RLLIL 6000 250K

VCTRY 2100

HEROQ 2000

DAVISON AAF

RONALD REAGAN WASHINGTON NATIONAL

JOINT BASE ANDREWS

POTOMAC APP CON

DCA D-ATIS

KADW D-ATIS

KDAAA AAF ATIS

P-568

P-56A

NOTE: Radar required.

NOTE: RNAV 1.

NOTE: DME/DME/IRU or GPS required.

NOTE: Turboprops only, turboprops as assigned by ATC only.

NOTE: Prohibited (P56) 1.5 NM north of DCA - avoid surface to FL180.

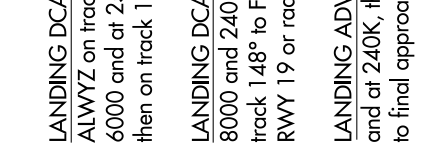
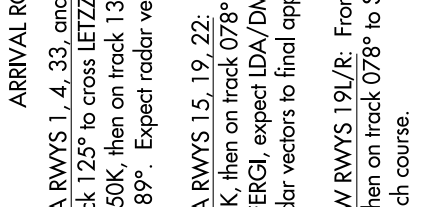
NOTE: Maintain last assigned altitude until cleared to "descend via" the FRDMM5. ARTCC will issue landing direction assignment (north or south) and Potomac TRACON will issue runway assignments.

**ARRIVAL ROUTE DESCRIPTION**

**LANDING DCA RWYS 1, 4, 33, and ADW RWYS 1L/R and LANDING DAA:** From ALWYZ on track 125° to cross LETZ at 8000, then on track 130° to cross RLLIL at 6000 and at 250K, then on track 131° to VCTRY, then on track 189° to HEROQ, then on track 189°. Expect radar vectors to final approach course.

**LANDING DCA RWYS 15, 19, 22:** From ALWYZ on track 122° to cross FRDMM at 8000 and 240K, then on track 078° to STAND, then on track 078° to TGTNR, then on track 148° to FERG, expect LDA/DME RWY 19, RNAV (RNP) RWY 19, RIVER VISUAL RWY 19 or radar vectors to final approach course.

**LANDING ADW RWYS 19L/R:** From ALWYZ on track 122° to cross FRDMM at 8000 and at 240K, then on track 078° to STAND, then on track 078°. Expect radar vectors to final approach course.



FRDMM FIVE ARRIVAL (RNAV) Arrival Routes

WASHINGTON, DC

NE-3, 05 NOV 2020 to 03 DEC 2020

NOTE: Chart not to scale.