

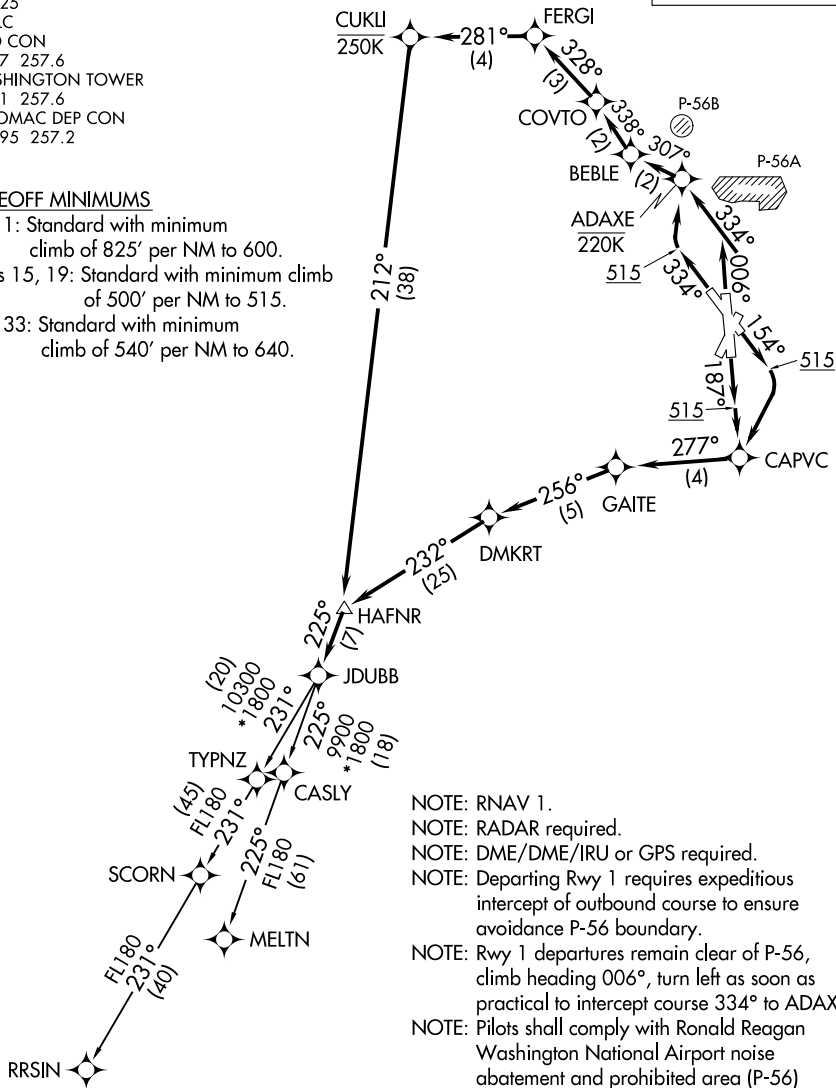
# JDUBB THREE DEPARTURE (RNAV)

**TOP ALTITUDE:  
5000**

D-ATIS  
132.65  
CLNC DEL  
128.25  
CPDLC  
GND CON  
121.7 257.6  
WASHINGTON TOWER  
119.1 257.6  
POTOMAC DEP CON  
118.95 257.2

### TAKEOFF MINIMUMS

Rwy 1: Standard with minimum  
climb of 825' per NM to 600.  
Rwys 15, 19: Standard with minimum climb  
of 500' per NM to 515.  
Rwy 33: Standard with minimum  
climb of 540' per NM to 640.



- NOTE: RNAV 1.
- NOTE: RADAR required.
- NOTE: DME/DME/IRU or GPS required.
- NOTE: Departing Rwy 1 requires expeditious intercept of outbound course to ensure avoidance P-56 boundary.
- NOTE: Rwy 1 departures remain clear of P-56, climb heading 006°, turn left as soon as practical to intercept course 334° to ADAXE.
- NOTE: Pilots shall comply with Ronald Reagan Washington National Airport noise abatement and prohibited area (P-56) avoidance procedures as defined in the Chart Supplement special notices.

(NARRATIVE ON FOLLOWING PAGE)

NOTE: Chart not to scale.

# JDUBB THREE DEPARTURE (RNAV)