

LOC/DME I-VVWH	APP CRS	Rwy Idg	6869
108.5	147°	TDZE	13
Chan 22		Apt Elev	14

# LDA Z RWY 19

RONALD REAGAN WASHINGTON NATIONAL (DCA)

**⚠** Inop table does not apply. Circling NA northeast of Rwy 15-33. Rwy 19 helicopter visibility reduction below 1 SM NA. DME required.

**MALSF**  
**MISSED APPROACH:** Climbing right turn to 3000 on DCA VOR/DME R-185 to BADDN/DCA VOR/DME 5.9 DME and hold, continue climb-in-hold to 3000.

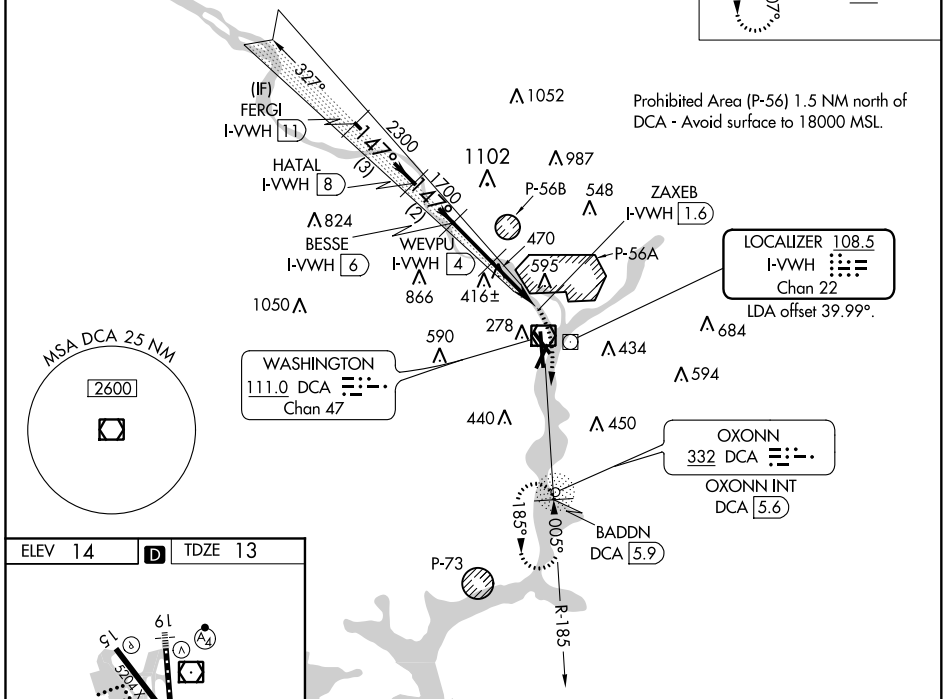
D-ATIS	POTOMAC APP CON	WASHINGTON TOWER	GND CON	CLNC DEL	CPDLC
132.65	119.85 239.25 (WEST/SOUTH) 124.2 360.8 (EAST)	119.1 257.6	121.7 257.6	128.25	

ALTERNATE MISSED APCH FIX

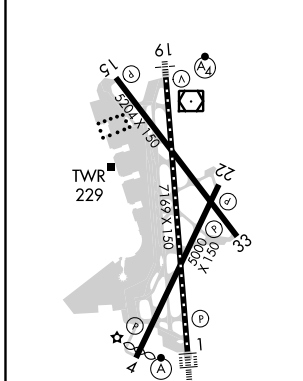


## RADAR REQUIRED

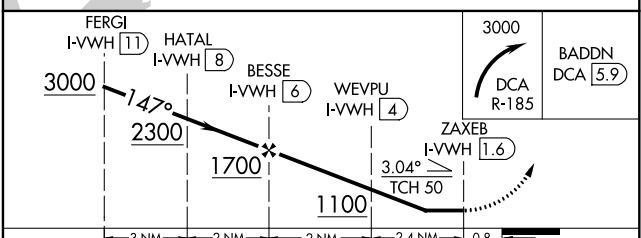
Prohibited Area (P-56) 1.5 NM north of DCA - Avoid surface to 18000 MSL.



ELEV 14	<b>D</b>	TDZE 13
---------	----------	---------



TDZ/CL Rwy 1  
 MIRL Rwy 4-22  
 REIL Rwys 4, 22, 15 and 33  
 HIRL Rwys 1-19 and 15-33



CATEGORY	A	B	C	D
S-19	720/55	707 (800-1)	720-2	707 (800-2)
<b>C</b> CIRCLING	720-1	706 (800-1)	840-1½ 826 (900-1½)	900-3 886 (900-3)

# LDA Z RWY 19

NE-3, 05 NOV 2020 to 03 DEC 2020

NE-3, 05 NOV 2020 to 03 DEC 2020