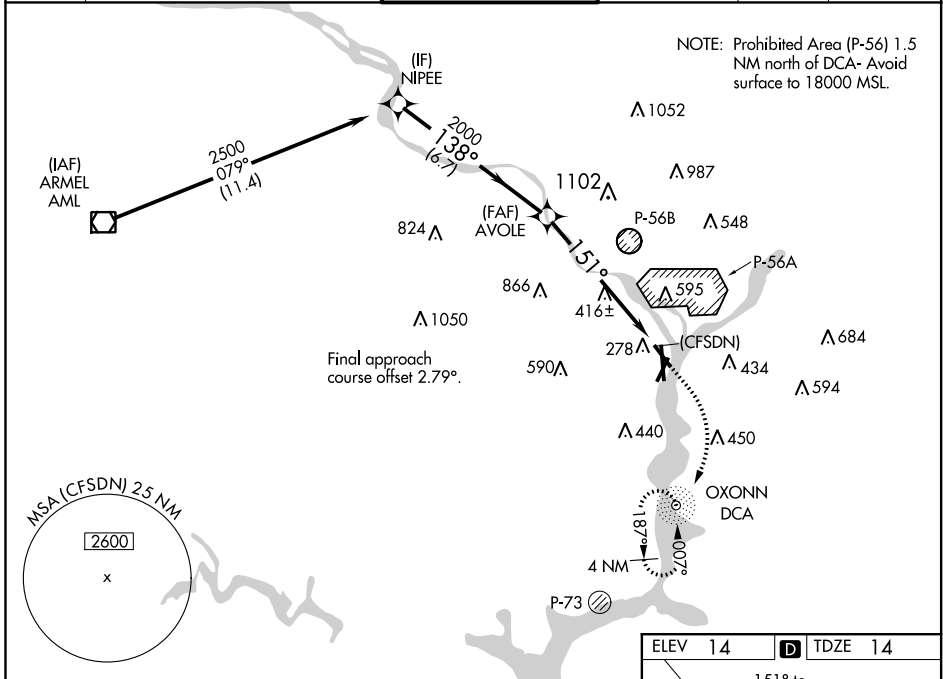


WAAS CH 70737 W15A	APP CRS 151°	Rwy Idg 5204 TDZE 14 Apt Elev 14
--	------------------------	---

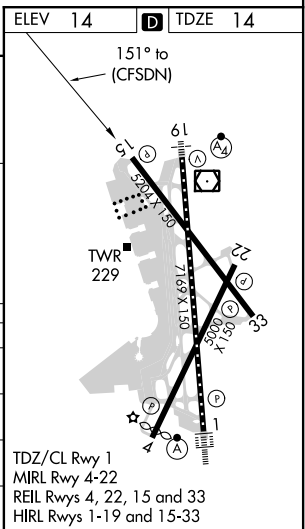
RNAV (GPS) RWY 15

RONALD REAGAN WASHINGTON NATIONAL (DCA)

RNP APCH.		MISSED APPROACH: (Do not exceed 210 KIAS until reaching 600 MSL) Climb to 600 then climbing right turn to 1800 direct DCA NDB and hold.		
<p>▼ For uncompensated Baro-VNAV systems, LNAV/VNAV NA below -9°C (16°F) or above 54°C (130°F). Circling NA northeast of Rwy 15-33. ▲ Rwy 15 helicopter visibility reduction below ¾ SM NA.</p>				
D-ATIS 132.65	POTOMAC APP CON 119.85 239.25 (WEST/SOUTH) 124.2 360.8 (EAST)	WASHINGTON TOWER 119.1 257.6	GND CON 121.7 257.6	CLNC DEL 128.25
		CPDLC		



VGSI and RNAV glidepath not coincident (VGSI Angle 3.00/TCH 36).				
		600	1800	DCA
		↑	↷	
		* LNAV only.		
		* 2.3 NM to (CFSDN)		
CATEGORY	A	B	C	D
LPV DA	394-1¼ 380 (400-1¼)			
LNAV/VNAV DA	745-2½ 731 (800-2½)			
LNAV MDA	800-1 786 (800-1)	800-1¼ 786 (800-1¼)	800-2½ 826 (900-2½)	786 (800-2½)
C CIRCLING	800-1 786 (800-1)	800-1¼ 786 (800-1¼)	840-2½ 826 (900-2½)	900-3 886 (900-3)



NE-3, 05 NOV 2020 to 03 DEC 2020

NE-3, 05 NOV 2020 to 03 DEC 2020