

WAAS CH 90123 W33A	APP CRS 334°	Rwy Idg 5204 TDZE 13 Apt Elev 14
--	------------------------	---

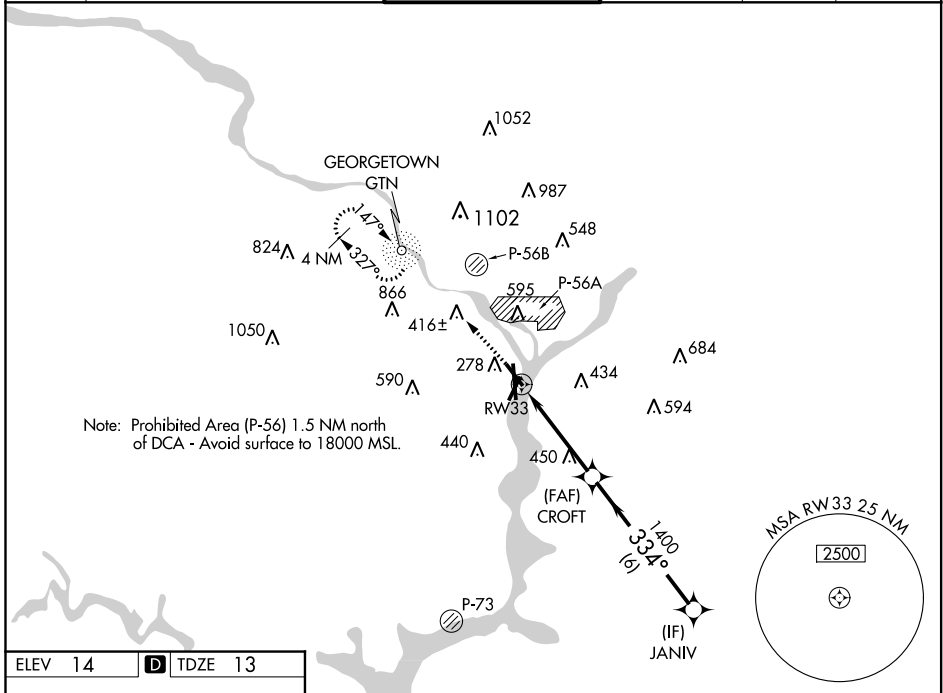
RNAV (GPS) RWY 33

RONALD REAGAN WASHINGTON NATIONAL (DCA)

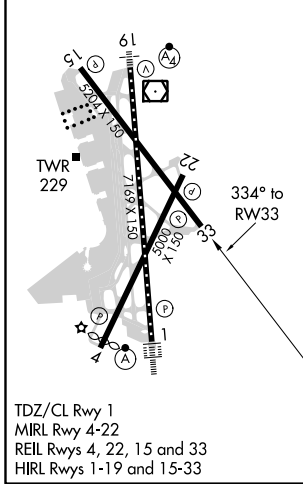
⚠ For uncompensated Baro-VNAV systems, LNAV/VNAV NA below -9°C (16°F) or above 54°C (130°F).
⚠ Circling NA northeast of Rwy 15-33. DME/DME RNP-0.3 NA.

MISSED APPROACH: Climb to 2200 direct GTN NDB and hold, continue climb-in-hold to 2200.

D-ATIS 132.65	POTOMAC APP CON 119.85 239.25 (WEST/SOUTH) 124.2 360.8 (EAST)	WASHINGTON TOWER 119.1 257.6	GND CON 121.7 257.6	CLNC DEL 128.25	CPDLC
-------------------------	---	--	-------------------------------	---------------------------	-------



ELEV 14	D	TDZE 13
---------	----------	---------



2200	GTN	VGSi and RNAV glidepath not coincident (VGSi Angle 3.00/TCH 37).			
↑					
* LNAV only		* 2.1 NM to RWY 33		JANIV	
RWY 33		CROFT		JANIV	
2.1 NM		2.1 NM		6 NM	
1400		1400		2100	
334° to RWY 33		334°		GP 3.00° TCH 55	
CATEGORY	A	B	C	D	
LPV DA	263-¾		250 (300-¾)		
LNAV/VNAV DA	609-2		596 (600-2)		
LNAV MDA	720-1	707 (800-1)		720-2	707 (800-2)
C CIRCLING	720-1	706 (800-1)		840-2½	900-3
				826 (900-2½)	886 (900-3)

NE-3, 05 NOV 2020 to 03 DEC 2020

NE-3, 05 NOV 2020 to 03 DEC 2020