

# TIKEE THREE ARRIVAL (RNAV)

WASHINGTON, DC

NE-3, 05 NOV 2020 to 03 DEC 2020

## ARRIVAL ROUTE DESCRIPTION

**BONE TRANSITION (BONE.TIKEE3):**  
**KESSEL TRANSITION (ESL.TIKEE3):**  
**SEALZ TRANSITION (SEALZ.TIKEE3):**

All aircraft types landing HEF, 2VG2, NYG, RMN, HWY, CJR, EZF: From TIKEE on track 090° to JETIS, then on heading 090° or as assigned by ATC. Expect RADAR vectors to final approach course.

Props and Turboprop aircraft landing DAA, W00, VKX, ADW, 2W5, DCA, W32: From TIKEE on track 122° to GILFF, then on track 090° to HIGPO, then on heading 090° or as assigned by ATC. Expect RADAR vectors to final approach course.

POTOMAC APP CON  
 120.45 306.925  
 DCA D-ATIS  
 132.65  
 KADW D-ATIS  
 113.1 251.05  
 KDAW ATIS  
 128.175

NOTE: RADAR required.

NOTE: RNAV 1.

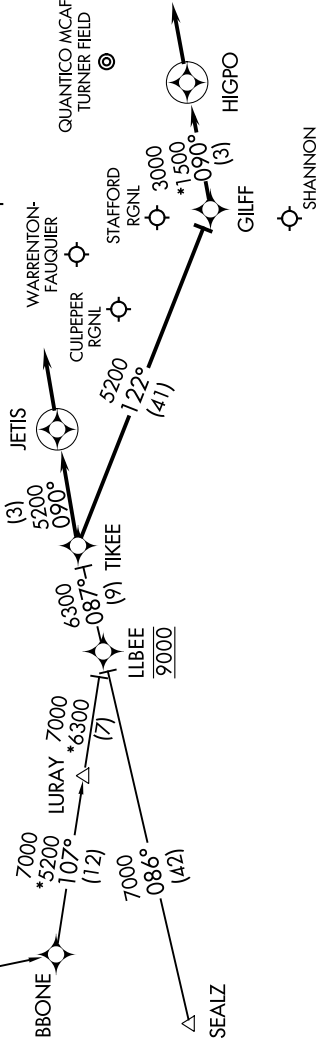
NOTE: DME/DME/IRU or GPS required.

NOTE: Procedure available to all type aircraft landing the following airports: 2VG2, CJR, HWY, HEF, RMN, EZF, NYG.

NOTE: Props or Turboprop aircraft only landing the following airports: DAA, 2W5, VKX, W32, W00, DCA, ADW.

KESSEL  
 ESL  
 FL190

7000  
 \*5600  
 178°  
 (37)



NOTE: Chart not to scale

# TIKEE THREE ARRIVAL (RNAV)

WASHINGTON, DC

NE-3, 05 NOV 2020 to 03 DEC 2020