

LOC/DME I-DMP 111.7 Chan 54	APP CRS 234°	Rwy Idg TDZE Apt Elev 10000 409 435
---	------------------------	---

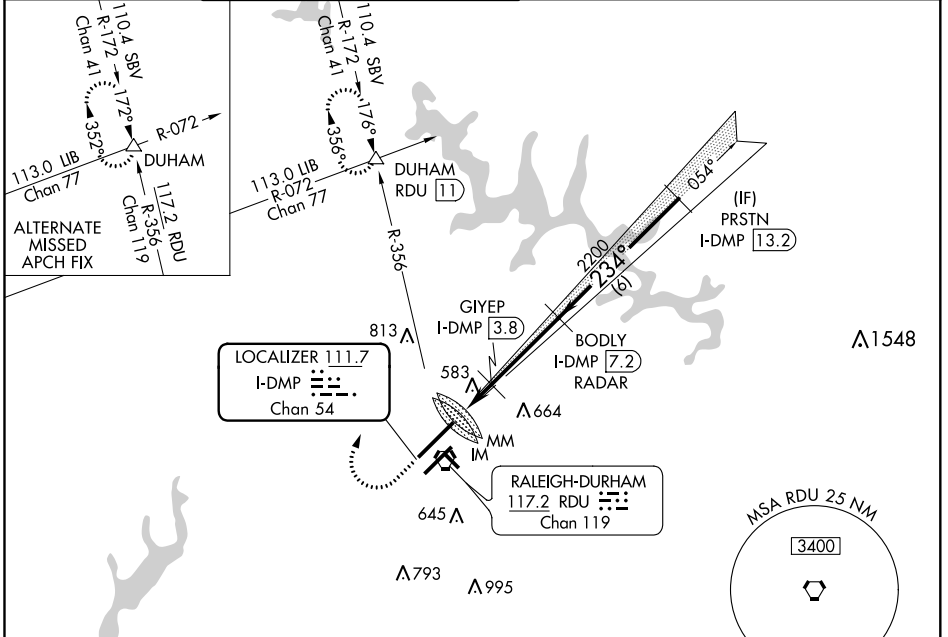
ILS RWY 23R (CAT II & III)

RALEIGH-DURHAM INTL (RDU)

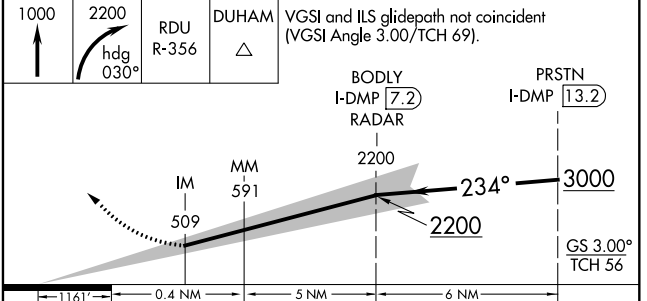
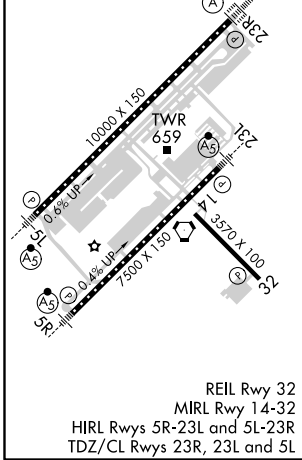
RADAR required for procedure entry, DME or RADAR required.
 Simultaneous approach authorized.

ALSF-2
 MISSED APPROACH: Climb to 1000 then climbing right turn to 2200 on heading 030° and on RDU VORTAC R-356 to DUHAM INT/RDU 11 DME and hold.

D-ATIS 123.8	RALEIGH APP CON 127.675 307.9	(EAST) RALEIGH TOWER (WEST) 127.45 257.8 119.3 257.8 Rwys 5R-23L and 1-4-32 Rwy 5L-23R	(EAST) GND CON (WEST) 121.9 348.6 121.7 348.6 Rwys 5R-23L and 1-4-32 Rwy 5L-23R	CLNC DEL 120.1	CPDLC
------------------------	---	--	---	--------------------------	-------



ELEV 435	D	TDZE 409
-----------------	----------	-----------------



CATEGORY	A	B	C	D
S-ILS 23R	CAT II RA 105/12 100 DA 509			
S-ILS 23R	CAT III RVR 06			

CATEGORY II & III ILS - SPECIAL AIRCREW & AIRCRAFT CERTIFICATION REQUIRED

SE-2, 05 NOV 2020 to 03 DEC 2020

SE-2, 05 NOV 2020 to 03 DEC 2020