

LOC/DME I-LEI 108.5 Chan 22	APP CRS 234°	Rwy Idg 7500 TDZE 435 Apt Elev 435
---	------------------------	---

ILS or LOC RWY 23L

RALEIGH-DURHAM INTL (RDU)

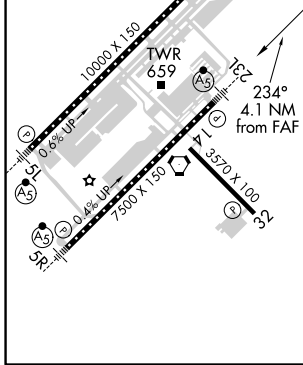
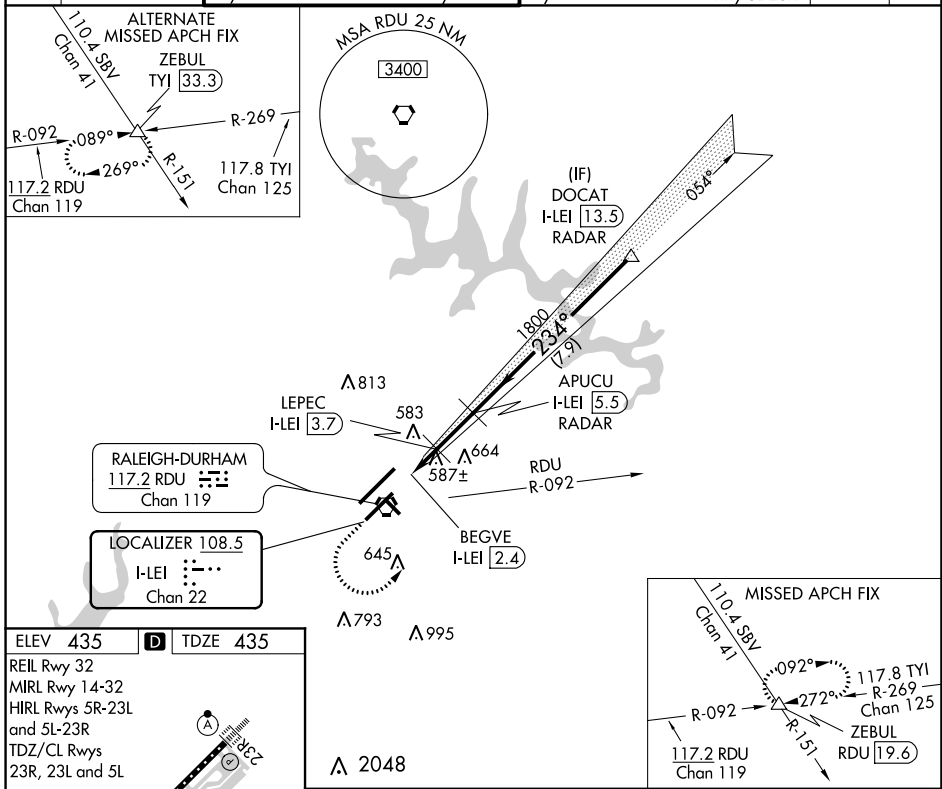
RADAR required for procedure entry. DME required for LOC only.

Simultaneous approach authorized. For inop ALS, increase S-ILS 23L all Cats visibility to RVR 5500. For inop ALS, increase S-LOC-23L Cat C/D visibility to 2½ SM. Localizer unusable for coupled approaches below 1100 or within 2 NM of threshold.



MISSED APPROACH: Climb to 1100 then climbing left turn to 2600 on heading 050° and RDU VORTAC R-092 to ZEBUL INT and hold.

D-ATIS 123.8	RALEIGH APP CON 127.675 307.9	(EAST) RALEIGH TOWER (WEST) 127.45 257.8 Rwys 5R-23L and 14-32	119.3 257.8 Rwy 5L-23R	(EAST) GND CON (WEST) 121.9 348.6 Rwys 5R-23L and 14-32	121.7 348.6 Rwy 5L-23R	CLNC DEL 120.1	CPDLC
------------------------	---	---	----------------------------------	--	----------------------------------	--------------------------	-------



1100	2600	ZEBUL	DOCAT
RDU R-092	hdg 050°	APUCU I-LEI 5.5 RADAR	I-LEI 13.5 RADAR
*LOC only.			
BEGVE I-LEI 2.4	LEPEC I-LEI 3.7	1800	4000
*1200		1800	GS 3.00° TCH 56
1 NM		1.3 NM	1.8 NM
7.9 NM			
CATEGORY	A	B	C
S-ILS 23L	806/35 371 (400-5%)		
S-LOC 23L	840/40 405 (500-3/4)		
CIRCLING	960-1¼	525 (600-1¼)	1040-1¾ 605 (700-1¾)
			1180-2½ 745 (800-2½)

SE-2, 05 NOV 2020 to 03 DEC 2020

SE-2, 05 NOV 2020 to 03 DEC 2020