

LOC/DME I-DMP 111.7 Chan 54	APP CRS 234°	Rwy Idg TDZE Apt Elev 10000 409 435
---	------------------------	---

ILS or LOC RWY 23R

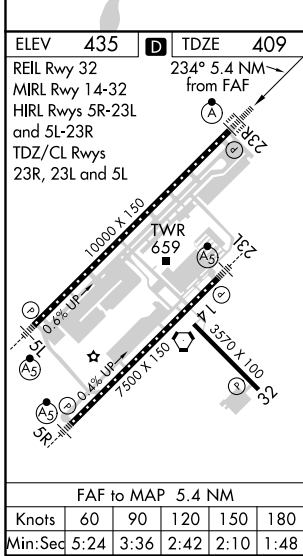
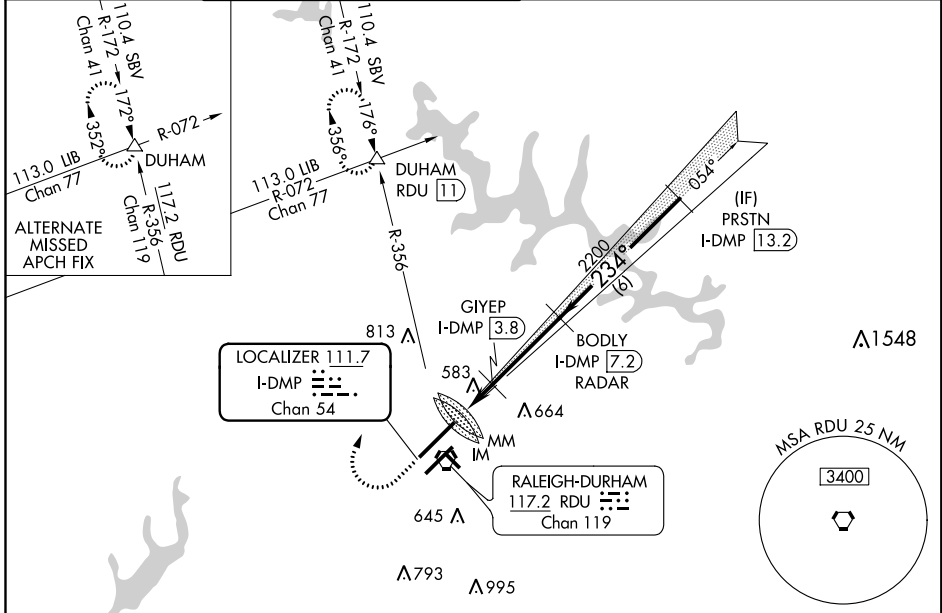
RALEIGH-DURHAM INTL (RDU)

RADAR required for procedure entry, DME or RADAR required. ALSF-2

MISSED APPROACH: Climb to 1000 then climbing right turn to 2200 on heading 030° and on RDU VORTAC R-356 to DUHAM INT/RDU 11 DME and hold.

Simultaneous approach authorized.

D-ATIS 123.8	RALEIGH APP CON 127.675 307.9	(EAST) RALEIGH TOWER (WEST) 127.45 257.8 119.3 257.8 Rwys 5R-23L and 1-4-32 Rwy 5L-23R	(EAST) GND CON (WEST) 121.9 348.6 121.7 348.6 Rwys 5R-23L and 1-4-32 Rwy 5L-23R	CLNC DEL 120.1	CPDLC
------------------------	---	--	---	--------------------------	-------



1000	2200	DUHAM	VGSI and ILS glidepath not coincident (VGSI Angle 3.00/TCH 69).	
↑	hdg 030°	RDU R-356	BODLY I-DMP 7.2	
*LOC only.		GIYEP I-DMP 3.8	PRSTN I-DMP 13.2	
I-DMP 1.8		*I-DMP 3.1	2200	
I-DMP 3.8		2200	234°	
I-DMP 7.2		2200	3000	
I-DMP 13.2		2200	GS 3.00° TCH 56	
0.1 0.3 0.9 0.7		3.4 NM	6 NM	
CATEGORY	A	B	C	D
S-ILS 23R	609/18 200 (200-½)			
S-LOC 23R	1160/24 751 (800-½)	1160/40 751 (800-¾)	1160-1¾ 751 (800-1¾)	1160-2 751 (800-2)
CIRCLING	1160-1 725 (800-1)	1160-1¼ 725 (800-1¼)	1160-2¼ 725 (800-2¼)	1160-2½ 725 (800-2½)
GIYEP FIX MINIMUMS				
S-LOC 23R	900/24 491 (500-½)	900/40 491 (500-¾)	900/50 491 (500-1)	
CIRCLING	960-1 525 (600-1)	1040-1¾ 605 (700-1¾)	1180-2½ 745 (800-2½)	

SE-2, 05 NOV 2020 to 03 DEC 2020

SE-2, 05 NOV 2020 to 03 DEC 2020