

LOC/DME I-GKK 109.1 Chan 28	APP CRS 054°	Rwy Idg TDZE 10000 384 Apt Elev 435
--	------------------------	--

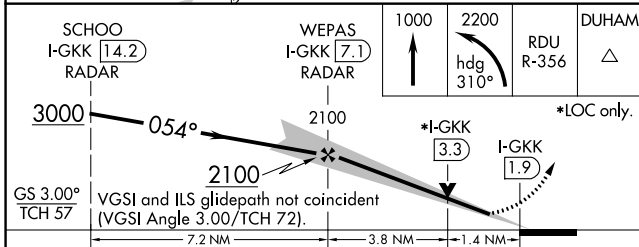
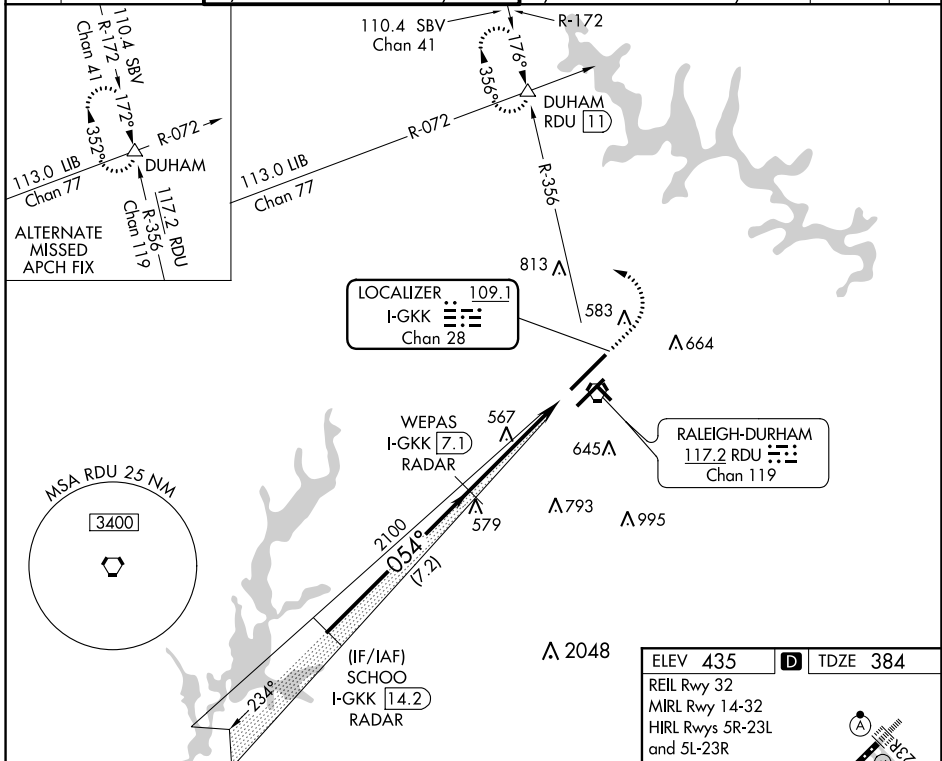
ILS or LOC RWY 5L

RALEIGH-DURHAM INTL (RDU)

RADAR required for procedure entry, DME required.
 Simultaneous approach authorized.

MALSRL
 MISSED APPROACH: Climb to 1000 then climbing left turn to 2200 on heading 310° and RDU VORTAC R-356 to DUHAM INT/RDU 11 DME and hold.

D-ATIS 123.8	RALEIGH APP CON 127.675 307.9	(EAST) RALEIGH TOWER 127.45 257.8	(WEST) 119.3 257.8	(EAST) GND CON 121.9 348.6	(WEST) 121.7 348.6	CLNC DEL 120.1	CPDLC
		Rwys 5R-23L and 14-32		Rwys 5R-23L and 14-32		Rwy 5L-23R	



ELEV 435	TDZE 384
REIL Rwy 32	MIRL Rwy 14-32
HIRL Rwys 5R-23L and 5L-23R	TDZ/CL Rwys 23R, 23L and 5L
054° 5.2 NM from FAF	
TWR 659	
7500 X 1500	
3570 X 100	
FAF to MAP 5.2 NM	
Knots	60 90 120 150 180
Min:Sec	5:12 3:28 2:36 2:05 1:44

CATEGORY	A	B	C	D
S-ILS 5L	595/18 211 (200-½)			
S-LOC 5L	880/24	496 (500-½)	880/40 496 (500-¾)	880/50 496 (500-1)
CIRCLING	960-1	525 (600-1)	1040-1¾ 605 (700-1¾)	1180-2½ 745 (800-2½)

SE-2, 05 NOV 2020 to 03 DEC 2020

SE-2, 05 NOV 2020 to 03 DEC 2020