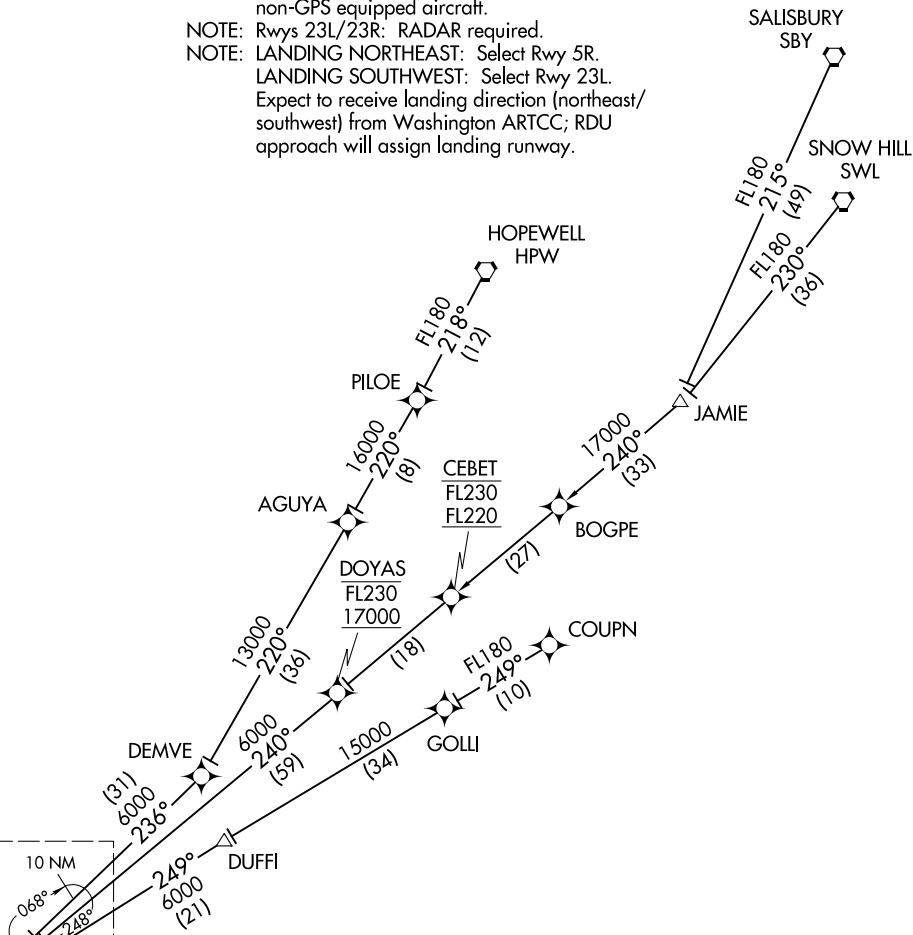


KAROO TWO ARRIVAL(RNAV) Transition Routes

RALEIGH APP CON
124.95 318.2
D-ATIS
123.8

- NOTE: RNAV 1.
 - NOTE: DME/DME/IRU or GPS required.
 - NOTE: Turbojet aircraft only.
 - NOTE: Rwy 5L/5R: RADAR required for non-GPS equipped aircraft.
 - NOTE: Rwy 23L/23R: RADAR required.
 - NOTE: LANDING NORTHEAST: Select Rwy 5R.
 - NOTE: LANDING SOUTHWEST: Select Rwy 23L.
- Expect to receive landing direction (northeast/southwest) from Washington ARTCC; RDU approach will assign landing runway.



SE-2, 05 NOV 2020 to 03 DEC 2020

SE-2, 05 NOV 2020 to 03 DEC 2020

10 NM

068°

248°

ARGAL
15000
10000

See following page for arrival routes

(NARRATIVE ON FOLLOWING PAGE)
(NOTES CONTINUED ON FOLLOWING PAGE)

COUPN TRANSITION (COUPN.KAROO2)
HOPEWELL TRANSITION (HPW.KAROO2)
SALISBURY TRANSITION (SBY.KAROO2)
SNOW HILL TRANSITION (SWL.KAROO2)

NOTE: Chart not to scale.