

PACKK EIGHT DEPARTURE

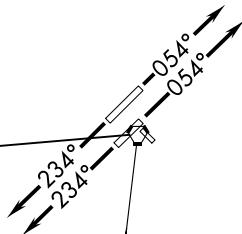
D-ATIS
123.8
CLNC DEL
120.1
CPDLC
RALEIGH DEP CON
132.35 256.9

ROANOKE
109.4 ROA
Chan 31
N37°20.61'-W80°04.22'
L-26, H-10-12

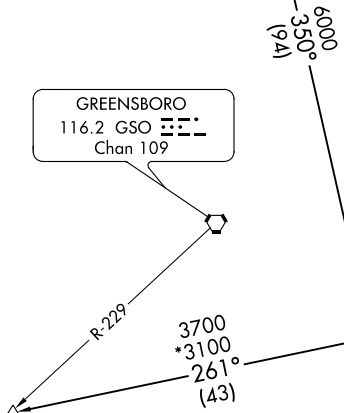
GREENSBORO
116.2 GSO
Chan 109

LIBERTY
113.0 LIB
Chan 77
N35°48.70'-W79°36.76'

V194-409



RALEIGH-DURHAM
117.2 RDU
Chan 119
N35°52.35'-W78°47.00'



SHPRD
N35°39.26'
W80°28.61'
L-25-36, H-9-12

NOTE: RADAR required.
NOTE: Turbojets only.

TAKEOFF MINIMUMS
Rwys 14, 32: NA-ATC.
Rwys 5L/R, 23L/R: Standard.

NOTE: Chart not to scale.

SE-2, 05 NOV 2020 to 03 DEC 2020

SE-2, 05 NOV 2020 to 03 DEC 2020



DEPARTURE ROUTE DESCRIPTION

TAKEOFF RUNWAYS 5L/R: Climb heading 054°, thence. . . .
TAKEOFF RUNWAYS 23L/R: Climb heading 234°, thence. . . .

. . . .as assigned to join filed route/fix, expect clearance to filed altitude/flight level ten minutes after departure.

ROANOKE TRANSITION (PACK8.ROA): From over RDU VORTAC on RDU R-274 and LIB R-088 to LIB VORTAC, then on LIB R-350 and ROA R-170 to ROA VOR/DME.
SHPRD TRANSITION (PACK8.SHPRD): From over RDU VORTAC on RDU R-274 and LIB R-088 to LIB VORTAC, then on LIB R-261 to SHPRD.