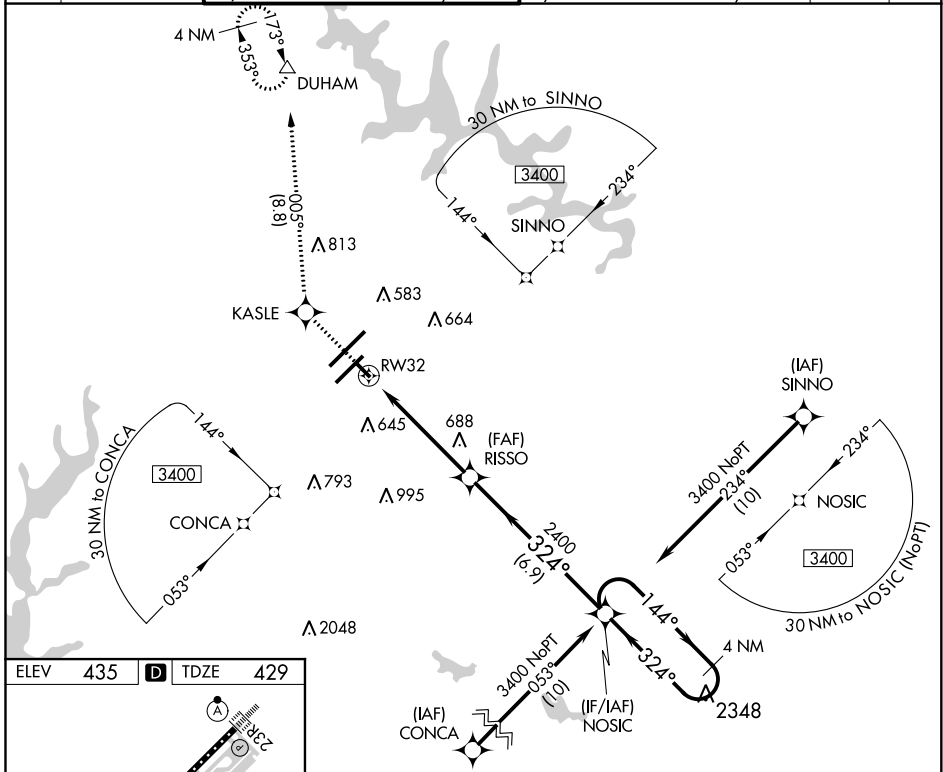


| | | |
|-------------|----------|-------------|
| APP CRS | Rwy Idg | 3570 |
| 324° | TDZE | 429 |
| | Apt Elev | 435 |

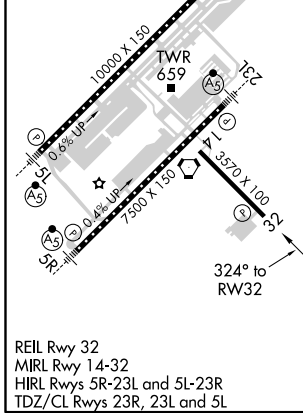
RNAV (GPS) RWY 32

RALEIGH-DURHAM INTL (RDU)

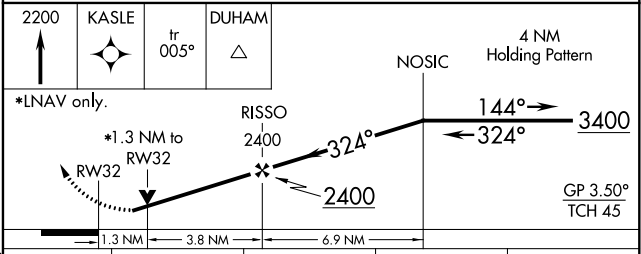
| | | | | | | |
|-----------|-----------------|--|---------------------------|---|---------------------------|-------|
| RNP APCH. | | Rwy 32 helicopter visibility reduction below 3/4 SM NA. Baro-VNAV NA below -15°C (5°F) or above 48°C (118°F). | | MISSED APPROACH: Climb to 2200 direct KASLE and on track 005° to DUHAM and hold. | | |
| D-ATIS | RALEIGH APP CON | (EAST) RALEIGH TOWER (WEST) | (EAST) GND CON | (WEST) | CLNC DEL | CPDLC |
| 123.8 | 127.675 307.9 | 127.45 257.8 Rwys 5R-23L and 14-32 | 119.3 257.8 Rwy 5L-23R | 121.9 348.6 Rwys 5R-23L and 14-32 | 121.7 348.6 Rwy 5L-23R | 120.1 |



| | | | | |
|------|-----|----------|------|-----|
| ELEV | 435 | D | TDZE | 429 |
|------|-----|----------|------|-----|



REIL Rwy 32
 MIRL Rwy 14-32
 HIRL Rwys 5R-23L and 5L-23R
 TDZ/CL Rwys 23R, 23L and 5L



| CATEGORY | A | B | C | D |
|-------------------|---------|---------------------|-------------------------|----|
| LNNAV/VNAV | DA | 820-1¼ 391 (400-1¼) | | NA |
| LNNAV MDA | 1000-1 | 571 (600-1) | 1000-1½ 571 (600-1½) | NA |
| C CIRCLING | 1000-1¼ | 565 (600-1¼) | 1040-1¾ 605 (700-1¾) | NA |

SE-2, 05 NOV 2020 to 03 DEC 2020

SE-2, 05 NOV 2020 to 03 DEC 2020