

APP CRS	Rwy Idg	7500
234°	TDZE	435
	Apt Elev	435

RNAV (RNP) Z RWY 23L

RALEIGH-DURHAM INTL (RDU)

RNP AR APCH.

▼ For uncompensated Baro-VNAV systems, LNAV/VNAV NA below -9°C or above 54°C. Use of FD or AP providing RNAV track guidance required during simultaneous operations. Simultaneous approach authorized, except for arrivals at KENCH.

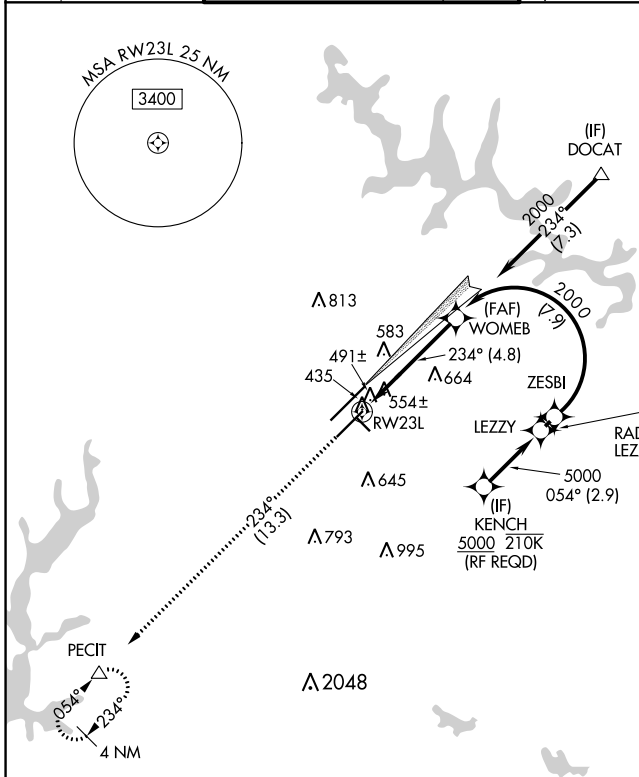


MISSED APPROACH:
Climb to 3300 on track 234° to PECIT and hold.

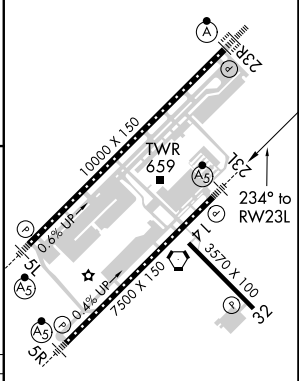
D-ATIS	RALEIGH APP CON	(EAST) RALEIGH TOWER (WEST)	(EAST) GND CON (WEST)	CLNC DEL	CPDLC
123.8	127.675 307.9	127.45 257.8 Rwys 5R-23L and 1-4-32	119.3 257.8 Rwy 5L-23R	121.9 348.6 Rwys 5R-23L and 1-4-32	121.7 348.6 Rwy 5L-23R
				120.1	

SE-2, 05 NOV 2020 to 03 DEC 2020

SE-2, 05 NOV 2020 to 03 DEC 2020



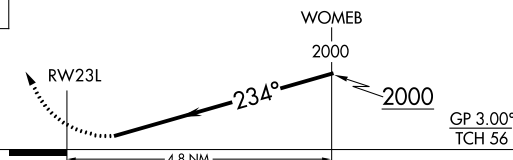
ELEV	435	D	TDZE	435
------	------------	----------	------	------------



3300
↑
tr 234°

PECIT **△**

See planview for multiple IF locations.



CATEGORY	A	B	C	D
RNP 0.10 DA		774/40	339 (400-¾)	
RNP 0.30 DA		870/50	435 (500-1)	

AUTHORIZATION REQUIRED

REIL Rwy 32
MIRL Rwy 1-4-32
HIRL Rwys 5R-23L and 5L-23R
TDZ/CL Rwys 5L, 23L, and 23R