


APP CRS	Rwy Idg	7500
054°	TDZE	420
	Apt Elev	435

RNAV (RNP) Z RWY 5R

RALEIGH-DURHAM INTL (RDU)

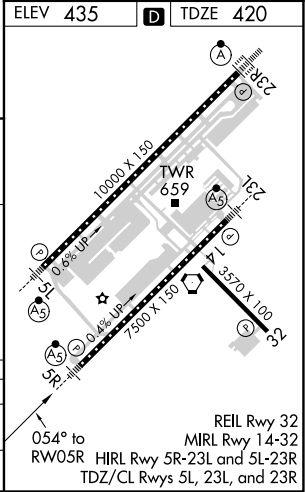
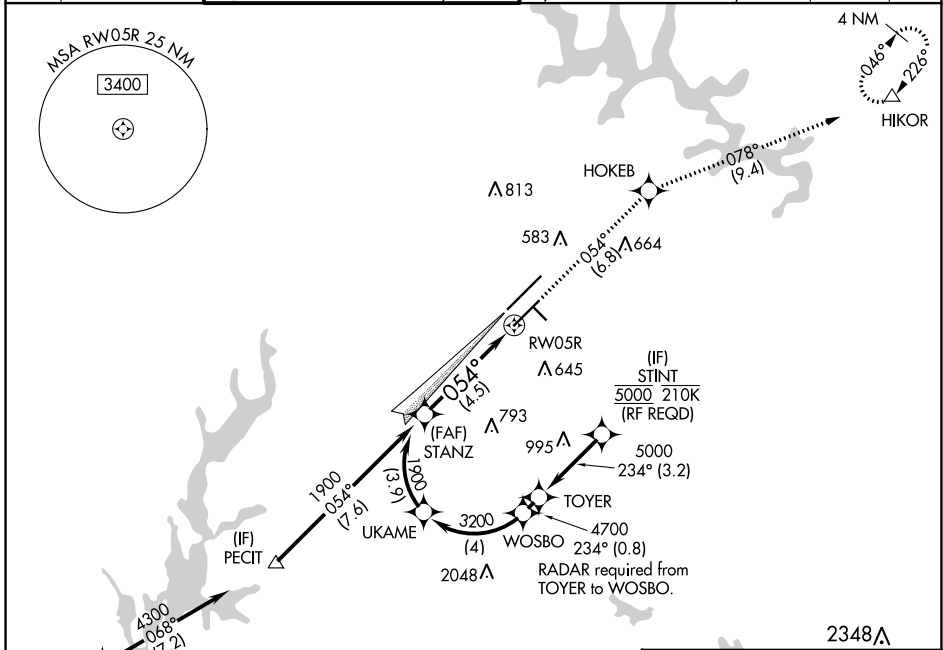
RNP AR APCH.


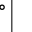
▼ For uncompensated Baro-VNAV systems, LNAV/VNAV NA below -9°C or above 54°C. Use of FD or AP providing RNAV track guidance required during simultaneous operations. For inop ALS, increase RNP 0.30 all Cats visibility to RVR 4500. Simultaneous approach authorized, except for arrivals at STINT.

MALSR 

MISSED APPROACH: Climb to 3000 on track 054° to HOKEB and on track 078° to HIKOR and hold.

D-ATIS	RALEIGH APP CON	(EAST) RALEIGH TOWER (WEST)	(EAST) GND CON	(WEST)	CLNC DEL	CPDLC
123.8	127.675 307.9	127.45 257.8 Rwys 5R-23L and 14-32	119.3 257.8 Rwy 5L-23R	121.9 348.6 Rwys 5R-23L and 14-32	121.7 348.6 Rwy 5L-23R	120.1



3000	HOKEB	HIKOR
↑		tr 078°
tr 054°		

See planview for multiple IF locations.

CATEGORY	A	B	C	D
RNP 0.30 DA		817/35	397 (400-%)	

AUTHORIZATION REQUIRED

SE-2, 05 NOV 2020 to 03 DEC 2020

SE-2, 05 NOV 2020 to 03 DEC 2020