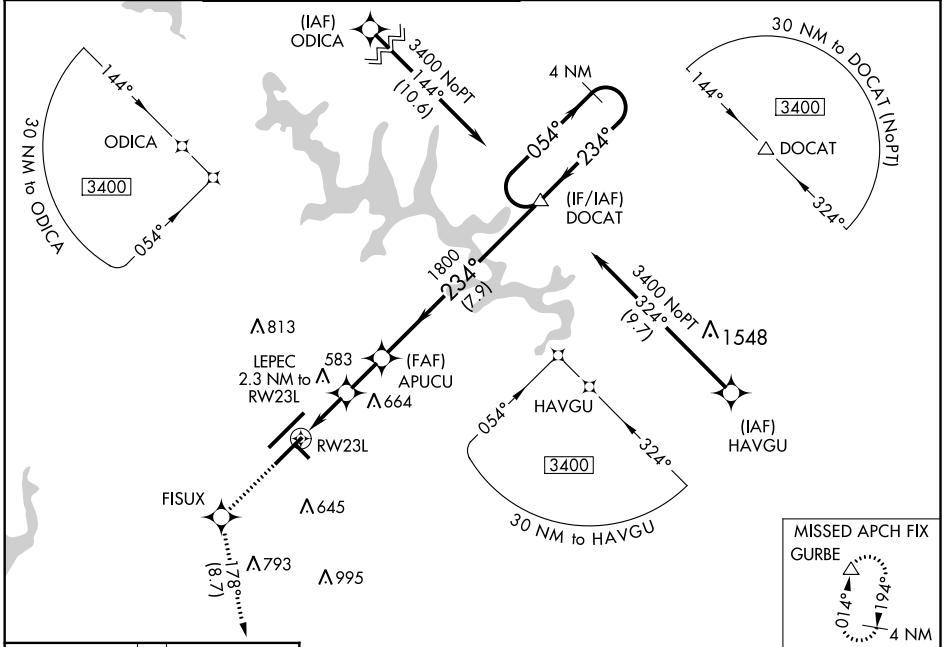


WAAS CH <b>65713</b> <b>W23B</b>	APP CRS <b>234°</b>	Rwy Idg TDZE Apt Elev	<b>7500</b> <b>435</b> <b>435</b>
--	------------------------	-----------------------------	---

# RNAV (GPS) Y RWY 23L

RALEIGH-DURHAM INTL (RDU)

RNP APCH.		MALSR	MISSED APPROACH: Climb to 3100 direct FISUX and left turn on track 178° to GURBE and hold.				
<p>▼ For uncompensated Baro-VNAV systems, LNAV/VNAV NA below -10°C (14°F) or above 54°C (130°F). Simultaneous approach authorized. LNAV procedure NA during simultaneous operations. Use of FD or AP required during simultaneous operations. For inop ALS, increase LNAV Cat C/D visibility to 1½ SM.</p>							
D-ATIS	RALEIGH APP CON	(EAST) RALEIGH TOWER	(WEST)	(EAST) GND CON	(WEST)	CLNC DEL	CPDLC
<b>123.8</b>	<b>127.675 307.9</b>	<b>127.45 257.8</b> Rwys 5R-23L and 14-32	<b>119.3 257.8</b> Rwy 5L-23R	<b>121.9 348.6</b> Rwys 5R-23L and 14-32	<b>121.7 348.6</b> Rwy 5L-23R	<b>120.1</b>	



SE-2, 05 NOV 2020 to 03 DEC 2020

SE-2, 05 NOV 2020 to 03 DEC 2020

ELEV 435	TDZE 435	FISUX GURBE tr 178°		
		<p>*LNAV only.</p>		
CATEGORY	A	B	C	D
LPV DA	635/18		200 (200-½)	
LNAV/VNAV DA	820/35		385 (400-5/8)	
LNAV MDA	920/24	485 (500-½)	920/50	485 (500-1)
<b>CIRCLING</b>	960-1	525 (600-1)	1040-1¾ 605 (700-1¾)	1180-2½ 745 (800-2½)