

WAAS CH 90213 W05B	APP CRS 054°	Rwy Idg 7500 TDZE 420 Apt Elev 435
----------------------------------------	------------------------	---------------------------------------------------------------

RNAV (GPS) Y RWY 5R

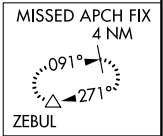
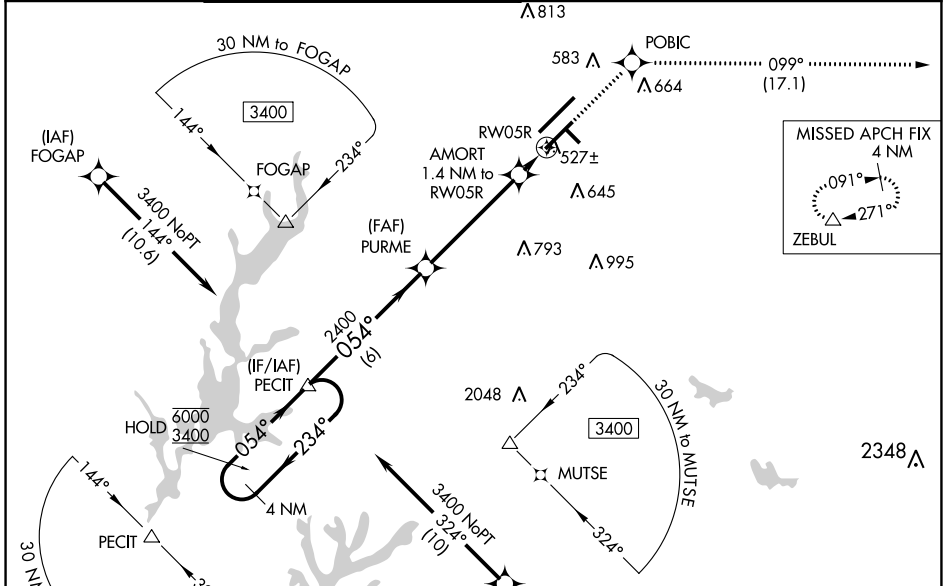
RALEIGH-DURHAM INTL (RDU)

RNP APCH.

Simultaneous approach authorized. LNAV procedure NA during simultaneous operations.
 For uncompensated Baro-VNAV systems, LNAV/VNAV NA below -10°C (14°F) or above 54°C (130°F). Use of FD or AP required during simultaneous operations. For inop ALS, increase LNAV/VNAV all Cats visibility to RVR 4500 and LNAV Cats C/D visibility to RVR 5500.

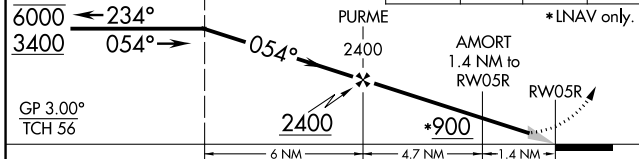
MALS R MISSED APPROACH:
 Climb to 2600 direct POBIC and on track 099° to ZEBUL and hold.

D-ATIS	RALEIGH APP CON	(EAST) RALEIGH TOWER (WEST)	(EAST) GND CON (WEST)	CLNC DEL	CPDLC
123.8	127.675 307.9	127.45 257.8 Rwys 5R-23L and 14-32	119.3 257.8 Rwy 5L-23R	121.7 348.6 Rwys 5R-23L and 14-32	120.1

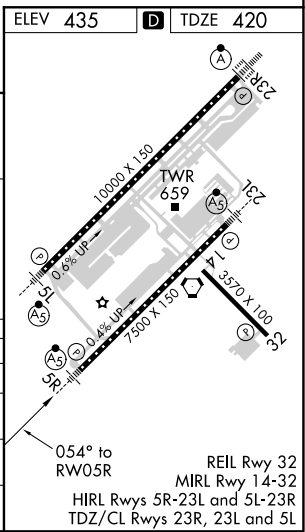


ELEV 435	TDZE 420
----------	----------

VGSI and RNAV glidepath not coincident (VGSI Angle 3.00/TCH 62).
 4 NM Holding Pattern PECIT
 2600 POBIC tr 099° ZEBUL
 *LNAV only.



CATEGORY	A	B	C	D
LPV DA		620/24	200 (200-1/2)	
LNAV/VNAV DA		710/24	290 (300-1/2)	
LNAV MDA	780/24	360 (400-1/2)	780/30	360 (400-3/4)
CIRCLING	960-1	525 (600-1)	1040-1 3/4 605 (700-1 3/4)	1180-2 1/2 745 (800-2 1/2)



SE-2, 05 NOV 2020 to 03 DEC 2020

SE-2, 05 NOV 2020 to 03 DEC 2020