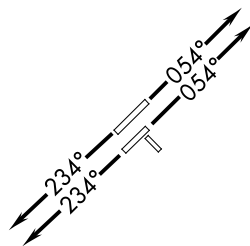
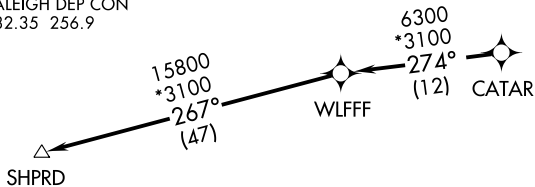


SHPRD THREE DEPARTURE(RNAV)

**TOP ALTITUDE:
7000**

D-ATIS
123.8
CLNC DEL
120.1
CPDLC
GND CON
121.9 348.6 (EAST)
(Rwys 5R-23L, 14-32)
121.7 348.6 (WEST)
(Rwy 5L-23R)
RALEIGH TOWER
127.45 257.8 (EAST)
(Rwys 5R-23L, 14-32)
119.3 257.8 (WEST)
(Rwy 5L-23R)
RALEIGH DEP CON
132.35 256.9



- NOTE: Transponder code will be assigned via PDC or Raleigh clearance delivery.
- NOTE: If unable to accept climb rate, advise ATC on initial contact.
- NOTE: RNAV 1.
- NOTE: DME/DME/IRU or GPS required.
- NOTE: RADAR required.
- NOTE: For turbojet aircraft only.

TAKEOFF MINIMUMS

Rwys 14, 32: NA - Runway too short for turbojets.
 Rwys 5L, 5R, 23R: Standard with minimum climb of 500' per NM to 940.
 Rwy 23L: Standard with minimum climb of 500' per NM to 1100.

NOTE: Chart not to scale.



DEPARTURE ROUTE DESCRIPTION

TAKEOFF RWYS 5L/R: Climb heading 054° or as assigned by ATC, expect RADAR vectors to CATAR, thence. . . .

TAKEOFF RWYS 23L/R: Climb heading 234° or as assigned by ATC, expect RADAR vectors to CATAR, thence. . . .

. . . .on depicted route to SHPRD, maintain 7000 or altitude assigned by ATC. Expect clearance to filed altitude within ten minutes after departure.

SE-2, 05 NOV 2020 to 03 DEC 2020

SE-2, 05 NOV 2020 to 03 DEC 2020