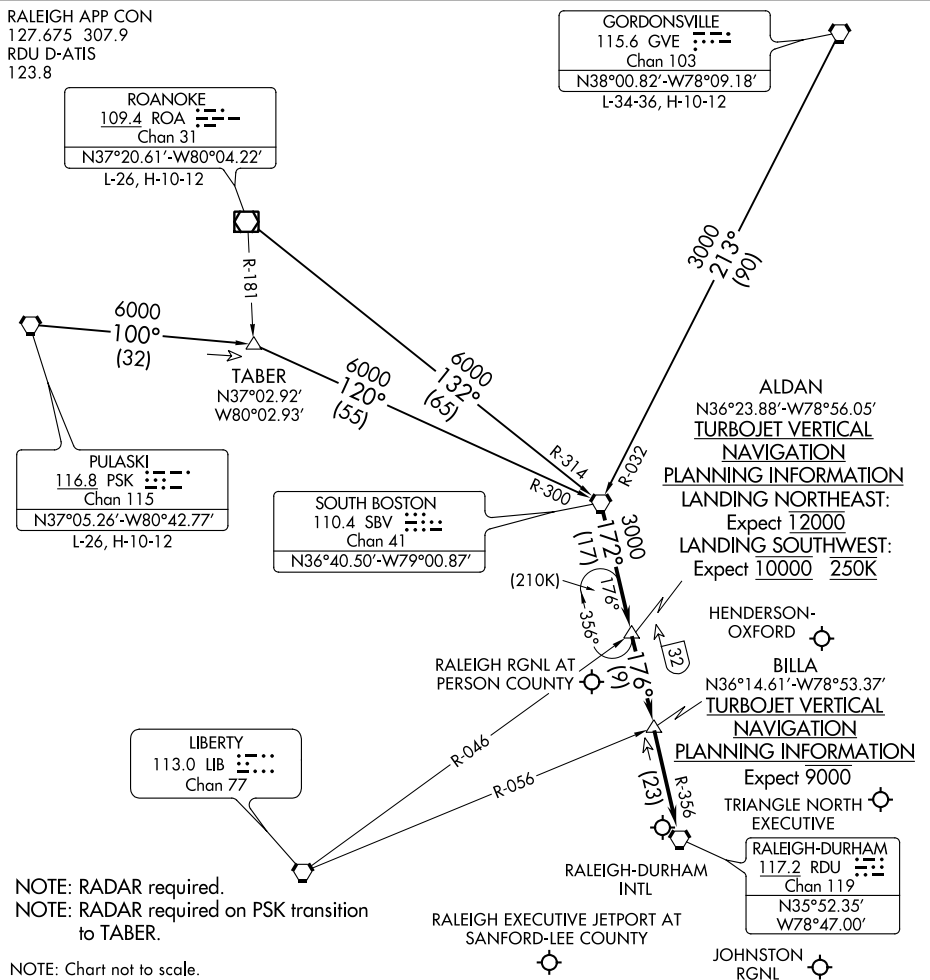


# SOUTH BOSTON SEVEN ARRIVAL

RALEIGH-DURHAM, NORTH CAROLINA



SE-2, 05 NOV 2020 to 03 DEC 2020

SE-2, 05 NOV 2020 to 03 DEC 2020

## ARRIVAL ROUTE DESCRIPTION

**GORDONSVILLE TRANSITION (GVE.SBV7):** From over GVE VORTAC on GVE R-213 and SBV R-032 to SBV VORTAC. Thence. . . .

**PULASKI TRANSITION (PSK.SBV7):** From over PSK VORTAC on PSK R-100 to TABER, then on SBV R-300 to SBV VORTAC. Thence. . . .

**ROANOKE TRANSITION (ROA.SBV7):** From over ROA VOR/DME on ROA R-132 and SBV R-314 to SBV VORTAC. Thence . . . .

. . . .from over SBV VORTAC on SBV R-172 and RDU VORTAC R-356 to RDU VORTAC. For arrivals to KRDU, KLHZ, KJNX, and KTTA airports: Expect RADAR vectors to final approach course after BILLA.  
For arrivals to KHNZ and KTDF airports: Expect RADAR vectors to final approach course after ALDAN.

# SOUTH BOSTON SEVEN ARRIVAL

RALEIGH-DURHAM, NORTH CAROLINA