

# HI-ILS or LOC RWY 13

LOC/DME I-PVO <b>109.1</b> Chan <b>28</b>	APCH CRS <b>128°</b>	Rwy Idg TDZE Arprt Elev <b>75</b> <b>75</b>
---	-------------------------	---

JAL-669 [USAF]

ATLANTIC CITY INTL (KACY)

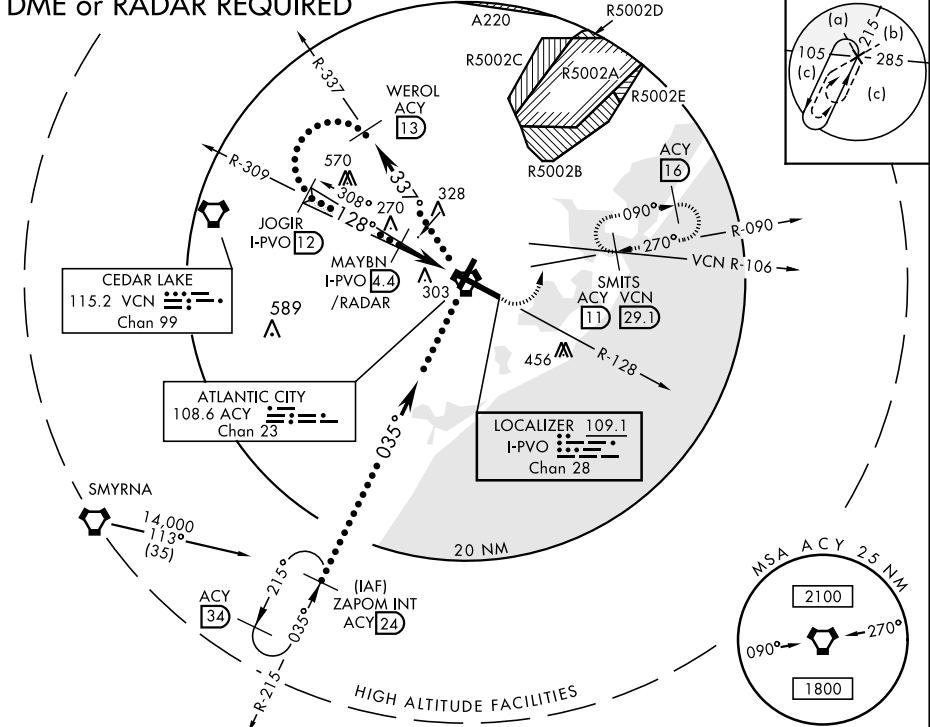
- ▼ \* When ALS inop, increase RVR to 40 and vis to 3/4 mile.
- ▲ \*\* When ALS inop, increase RVR to 50 and vis to 1 mile.



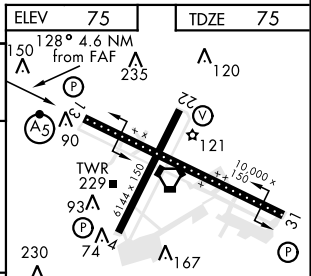
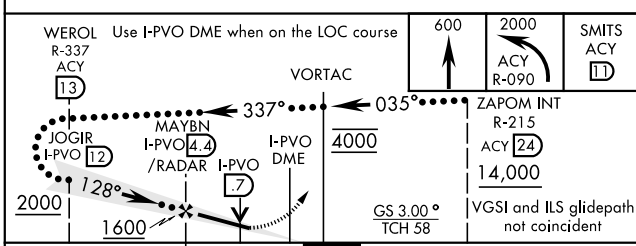
MISSED APPROACH: Climb to 600 then climbing left turn to 2000 via ACY R-090 to SMITS INT/ACY 11 DME and hold; or when directed by ATC, climb to 600 then climbing left turn to 2000 via heading 076° and VCN R-106 to SMITS INT/VCN 29.1 DME and hold E, RT, hdg 286° inbound.

ATIS <b>125.725 316.15</b>	ATLANTIC CITY APP CON 130°-309° <b>124.6 327.125</b> 310°-129° <b>134.25 292.2</b>	ATLANTIC CITY TOWER <b>120.3 239.0</b>	GND CON <b>121.9 284.6</b>	CLNC DEL <b>127.85 353.775</b>	ASR
-------------------------------	--	---	-------------------------------	-----------------------------------	-----

## DME or RADAR REQUIRED



EMERG SAFE ALT 100 NM 4200



CATEGORY	C	D	E
S-ILS 13 *	275/18 200	(200-1/2)	275/24 200 (200-1/2)
S-LOC 13 **	420/24 345 (400-1/2)	420/40	345 (400-3/4)
CIRCLING	540-1 1/2 465 (500-1 1/2)	640-2 565 (600-2)	760-2 1/2 685 (700-2 1/2)

ELEV 75	TDZE 75
150 128° 4.6 NM from FAF	235
90	120
230	121
74	167
10,000 + 150	51
120	22
140	121
160	121
180	121
200	121
Min:Sec	2:18 1:58 1:43 1:32 1:23

# HI-ILS or LOC RWY 13

NE-2, 05 NOV 2020 to 03 DEC 2020

NE-2, 05 NOV 2020 to 03 DEC 2020