

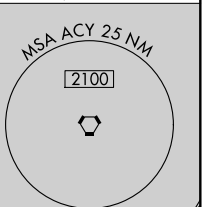
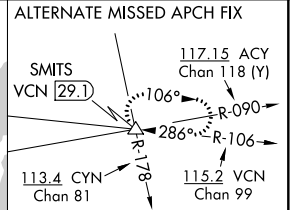
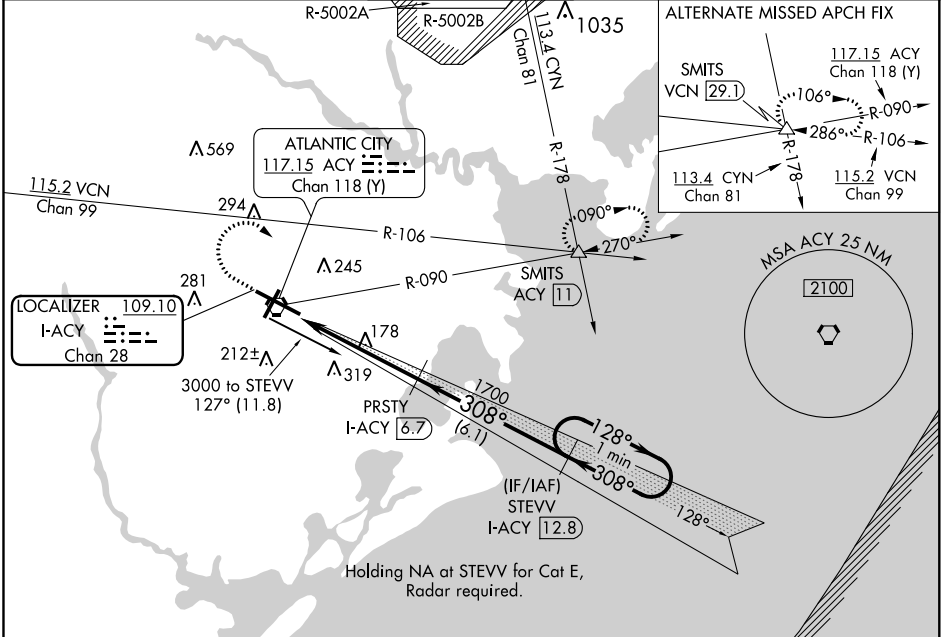
LOC/DME I-ACY <b>109.10</b> Chan 28	APP CRS <b>308°</b>	Rwy Idg TDZE Apt Elev	<b>10000</b> <b>64</b> <b>75</b>
---	------------------------	-----------------------------	--

# ILS or LOC/DME RWY 31

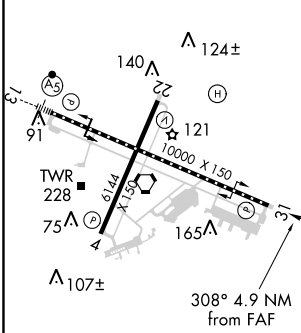
ATLANTIC CITY INTL (ACY)

<b>ASR</b>	MISSED APPROACH: Climb to 500 then climbing right turn to 2000 via heading 130° and via ACY R-090 to SMITS INT/ACY 11 DME and hold.
------------	---

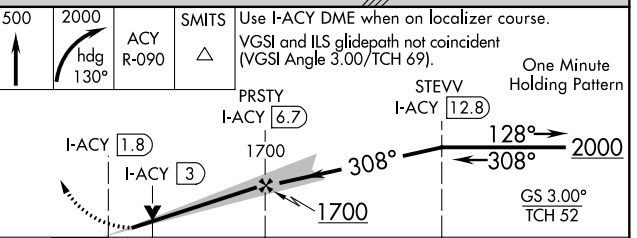
ATIS <b>125.725 316.15</b>	ATLANTIC CITY APP CON <b>124.6 327.125</b>	ATLANTIC CITY TOWER <b>120.3 239.0</b>	GND CON <b>121.9 284.6</b>	CLNC DEL <b>127.85 353.775</b>
-------------------------------	---	---	-------------------------------	-----------------------------------



ELEV 75	<b>D</b>	TDZE 64
---------	----------	---------



## DME REQUIRED



CATEGORY	A	B	C	D	E
S-ILS 31	264/40 200 (200-¾)				
S-LOC 31	520/50	456 (500-1)	520/60 456 (500-1¼)	520-1½	456 (500-1½)
CIRCLING	540-1	465 (500-1)	540-1½ 465 (500-1½)	640-2 565 (600-2)	760-2½ 685 (700-2½)

TDZ/CL Rwy 13  
HIRL Rws 4-22 and 13-31  
REIL Rwy 31

ATLANTIC CITY, NEW JERSEY  
Orig-C 16OCT14

39°27'N-74°35'W

# ATLANTIC CITY INTL (ACY) ILS or LOC/DME RWY 31

NE-2, 05 NOV 2020 to 03 DEC 2020

NE-2, 05 NOV 2020 to 03 DEC 2020