

WAAS CH <b>78231</b> W04A	APP CRS <b>038°</b>	Rwy Idg TDZE Apt Elev	<b>6144</b> <b>68</b> <b>75</b>
---------------------------------	------------------------	-----------------------------	---------------------------------------

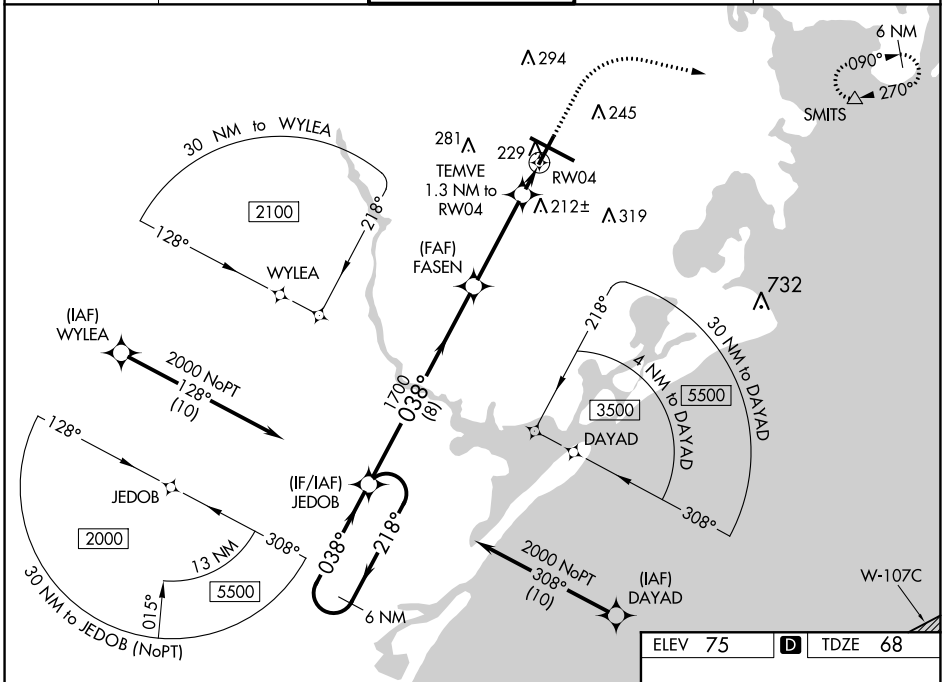
# RNAV (GPS) RWY 4

ATLANTIC CITY INTL (ACY)

**⚠** For uncompensated Baro-VNAV systems, LNAV/VNAV NA below -13°C (9°F) or above 54°C (130°F). DME/DME RNP-0.3 NA. Helicopter visibility reduction below 1 SM NA. Rwy 4 Straight-in and Circling minimums NA at night.

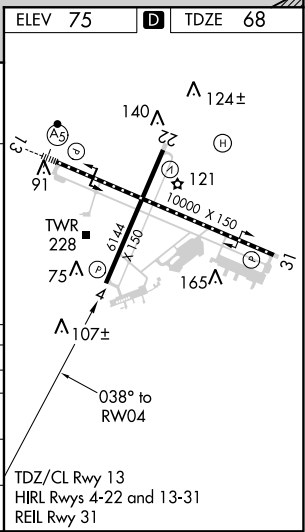
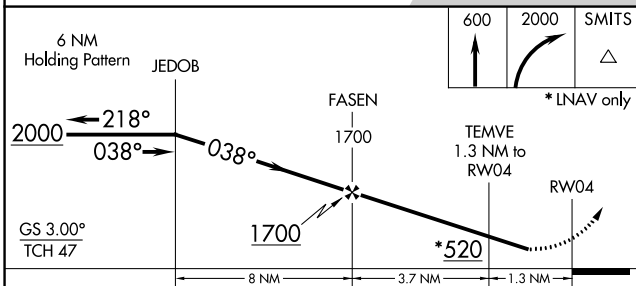
**MISSED APPROACH:** Climb to 600 then climbing right turn to 2000 direct SMITS and hold.

ATIS <b>125.725 316.15</b>	ATLANTIC CITY APP CON <b>124.6 327.125</b>	ATLANTIC CITY TOWER <b>120.3 239.0</b>	GND CON <b>121.9 284.6</b>	CLNC DEL <b>127.85 353.775</b>
-------------------------------	---	---	-------------------------------	-----------------------------------



NE-2, 05 NOV 2020 to 03 DEC 2020

NE-2, 05 NOV 2020 to 03 DEC 2020



CATEGORY	A	B	C	D	E
LPV DA	318-1		250 (300-1)		
LNAV/VNAV DA	534-1 <sup>5</sup> / <sub>8</sub>		466 (500-1 <sup>5</sup> / <sub>8</sub> )		
LNAV MDA	480-1	412 (500-1)	480-1 <sup>1</sup> / <sub>8</sub>	412 (500-1 <sup>1</sup> / <sub>8</sub> )	
CIRCLING	540-1	465 (500-1)	540-1 <sup>1</sup> / <sub>2</sub> 465 (500-1 <sup>1</sup> / <sub>2</sub> )	640-2 565 (600-2)	760-2 <sup>1</sup> / <sub>2</sub> 685 (700-2 <sup>1</sup> / <sub>2</sub> )