

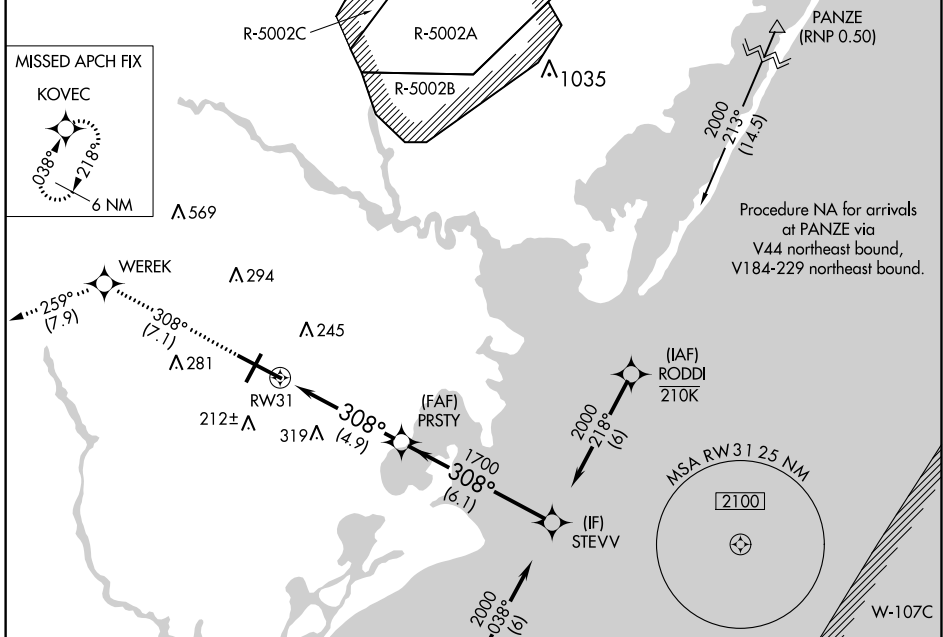
APP CRS	Rwy ldg	10000
308°	TDZE	63
	Apt Elev	75

RNAV (RNP) Z RWY 31

ATLANTIC CITY INTL (ACY)

<p>ASR GPS Required. Procedure NA at night. For uncompensated Baro-VNAV systems, procedure NA below -13°C (8°F) or above 54°C (130°F).</p>	<p>MISSED APPROACH: Climb to 2000 on track 308° to WEREK on track 259° to KOVEC and hold.</p>
---	--

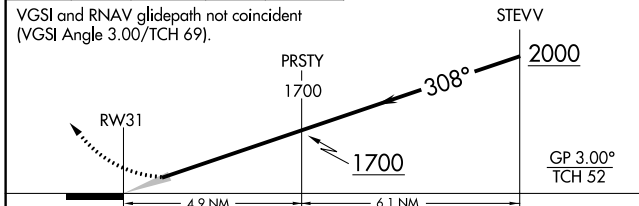
<p>ATIS 125.725 316.15</p>	<p>ATLANTIC CITY APP CON 124.6 327.125</p>	<p>ATLANTIC CITY TOWER 120.3 239.0</p>	<p>GND CON 121.9 284.6</p>	<p>CLNC DEL 127.85 353.775</p>
---------------------------------------	---	---	---------------------------------------	---



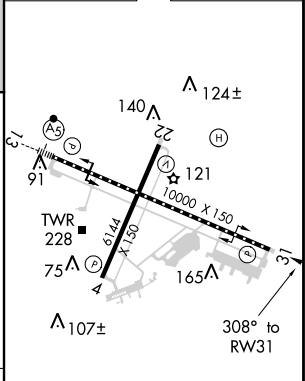
2000	↑	tr 308°	WEREK	↑	tr 259°	KOVEC	↑
------	---	---------	-------	---	---------	-------	---

Procedure Turn NA

VGSI and RNAV glidepath not coincident (VGSI Angle 3.00/TCH 69).



ELEV 75	D	TDZE 63
---------	----------	---------



CATEGORY	A	B	C	D
RNP 0.30 DA		408/60	345 (400-1¼)	

AUTHORIZATION REQUIRED

TDZ/CL Rwy 13
HIRL Rwy 4-22 and 13-31
REIL Rwy 31

NE-2, 05 NOV 2020 to 03 DEC 2020

NE-2, 05 NOV 2020 to 03 DEC 2020