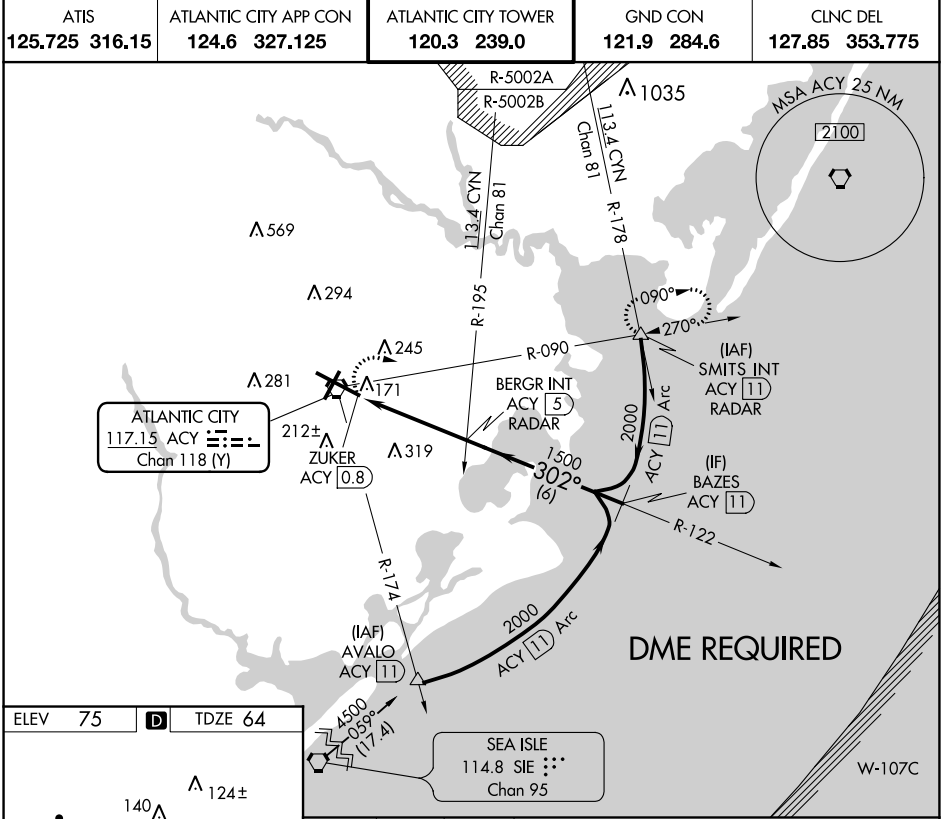


VORTAC ACY <b>117.15</b> Chan 118 (Y)	APP CRS <b>302°</b>	Rwy ldg <b>10000</b> TDZE <b>64</b> Apt Elev <b>75</b>
---	------------------------	--

# VOR RWY 31

ATLANTIC CITY INTL (ACY)

<p>ASR</p>	MISSED APPROACH: Climbing right turn to 2000 via heading 120° and ACY R-090 to SMITS INT/ACY 11 DME and hold.			
	ATIS <b>125.725 316.15</b>	ATLANTIC CITY APP CON <b>124.6 327.125</b>	ATLANTIC CITY TOWER <b>120.3 239.0</b>	GND CON <b>121.9 284.6</b>



ELEV 75	<b>D</b>	TDZE 64
---------	----------	---------

TDZ/CL Rwy 13  
HIRL Rws 4-22 and 13-31  
REIL Rwy 31

FAF to MAP 4.2 NM

Knots	60	90	120	150	180
Min:Sec	4:12	2:48	2:06	1:41	1:24

2000 hdg 120°	ACY R-090	SMITS 	VGS1 and descent angles not coincident (VGS1 Angle 3.00/TCH 69).
ZUKER ACY 0.8		BERGR INT ACY 5 RADAR	BAZES ACY 11
ACY 1.9		2000	Procedure Turn NA
TCH 52 ≤ 3.12°		1500	302°
1.1 NM		3.1 NM	6 NM

CATEGORY	A	B	C	D	E
S-31	480/50	416 (500-1)	480/60	416 (500-1½)	480-1½ 416 (500-1½)
CIRCLING	540-1	465 (500-1)	540-1½ 465 (500-1½)	640-2 565 (600-2)	760-2½ 685 (700-2½)

NE-2, 05 NOV 2020 to 03 DEC 2020

NE-2, 05 NOV 2020 to 03 DEC 2020