

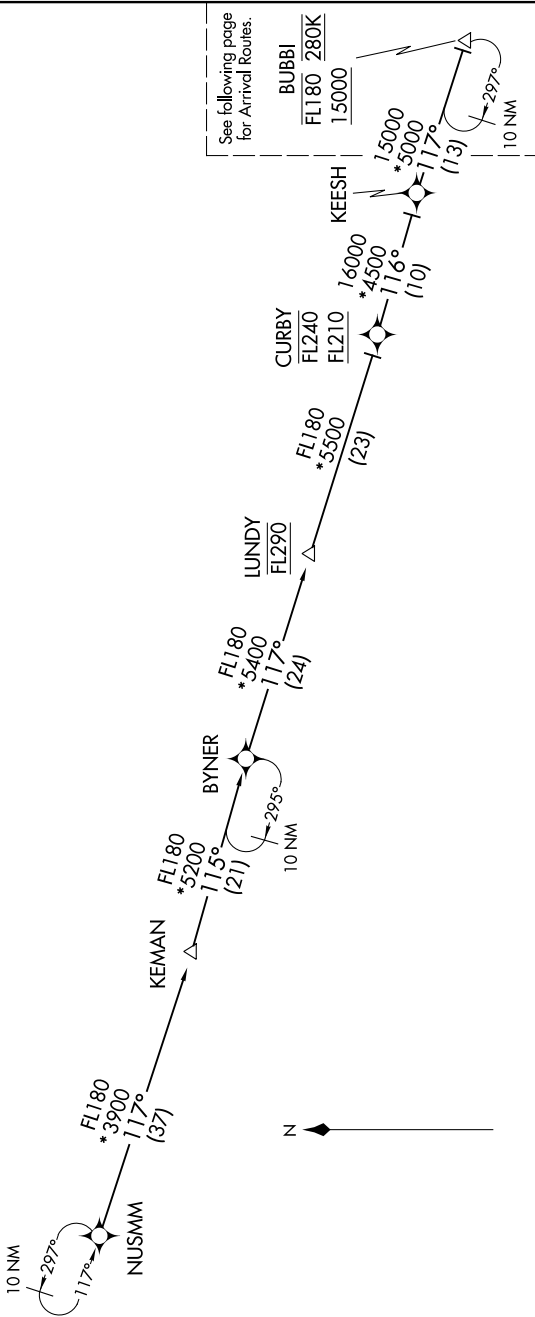
ANTHM THREE ARRIVAL (RNAV) Transition Routes

BALTIMORE, MARYLAND

NE-3, 05 NOV 2020 to 03 DEC 2020

POTOMAC APP CON
133.85 254.25
BWI D-ATIS
115.1 127.8

- NOTE: RADAR required
- NOTE: RNAV 1.
- NOTE: DME/DME/IRU or GPS required.
- NOTE: Turbojet aircraft only.
- NOTE: Prohibited area (P56) 1.5 NM north of DCA avoid surface to 18000 MSL.
- NOTE: ARTCC will issue landing direction assignment (east or west). Potomac TRACON will issue runway assignments.



NOTE: Chart not to scale.

(CONTINUED ON FOLLOWING PAGES)

NE-3, 05 NOV 2020 to 03 DEC 2020

KEESH TRANSITION (KEESH.ANTHM3)
 KEMAN TRANSITION (KEMAN.ANTHM3)
 NUSMM TRANSITION (NUSMM.ANTHM3)

ANTHM THREE ARRIVAL (RNAV) Transition Routes

BALTIMORE, MARYLAND