

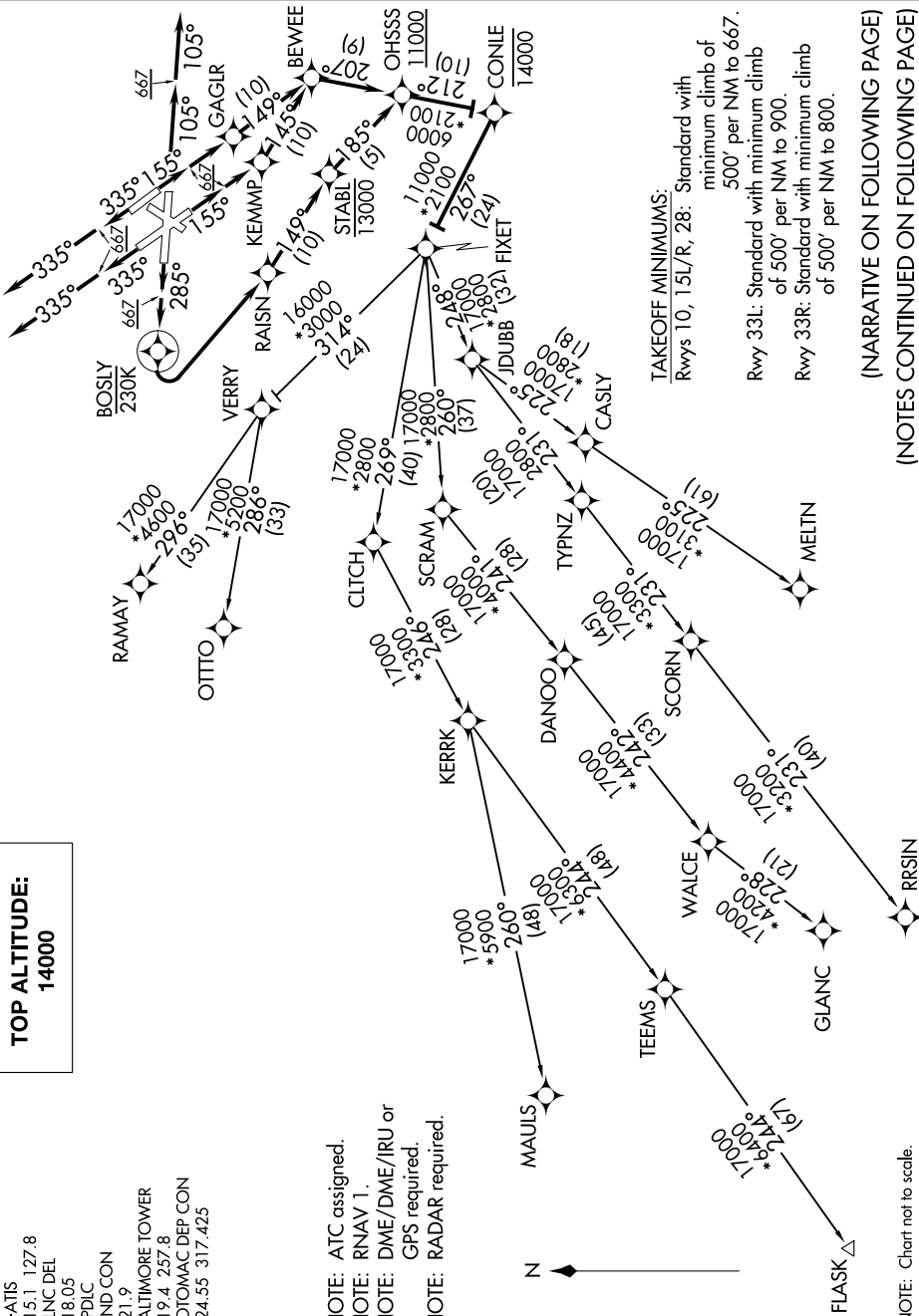
FIXET THREE DEPARTURE (RNAV)

NE-3, 05 NOV 2020 to 03 DEC 2020

**TOP ALTITUDE:
14000**

D-AIIS
115.1 127.8
CLNC DEL
118.05
CPDIC
GND CON
121.9
BALTIMORE TOWER
119.4 257.8
POTOMAC DEP CON
124.55 317.425

NOTE: ATC assigned.
NOTE: RNAV 1.
NOTE: DME/DME/IRU or
GPS required.
NOTE: RADAR required.



TAKEOFF MINIMUMS:

Rwys 10, 15L/R, 28: Standard with minimum climb of 500' per NM to 667.
Rwy 33L: Standard with minimum climb of 500' per NM to 900.
Rwy 33R: Standard with minimum climb of 500' per NM to 800.

(NARRATIVE ON FOLLOWING PAGE)
(NOTES CONTINUED ON FOLLOWING PAGE)

NE-3, 05 NOV 2020 to 03 DEC 2020

NOTE: Chart not to scale.